

# FIRE SERVICES STUDY

Catasauqua Borough, Lehigh County and  
North Catasauqua Borough,  
Northampton County, Pennsylvania  
February 2023



**Governor's Center for  
Local Government Services**  
Robert Hedden, MS, CFOD,  
MIFIRE, CFPS  
Fire Peer Consultant



## Table of Contents

Executive Summary .....	1
Introduction .....	3
Basis of Analysis.....	4
Municipal Overview .....	5
Fire Company Overview.....	18
Evaluation of Fire Services .....	19
Run Data.....	24
Analysis of Fire Services .....	40
PA HR 148.....	43
Model Ordinance .....	45
Staffing & Response Times .....	55
Fire Station Facilities .....	60
Fire Apparatus Fleet.....	63
Planning .....	64
General Items .....	65
Conclusion .....	66

## **1. Executive Summary**

In 2022, the Pennsylvania Department of Community & Economic Development (DCED) began a project to assess the fire services for Catasauqua Borough, Lehigh County and North Catasauqua Borough, Northampton County, as requested by these municipalities. This report is an analysis of operations, organizational management, equipment and facilities of the Catasauqua Fire Company and North Catasauqua Fire Company

As of the compilation of this document, the fire companies, and by extension, the municipalities have a symbiotic relationship regarding Fire/EMS Services. To continue to operate separate and distinct, services do not reflect the reality of the situation.

## **2. Purpose**

Municipalities should periodically review the fire services that they are responsible to deliver under the municipal laws of the Commonwealth. The purpose should be to make sure that fire protection is being delivered in a competent, prompt, professional manner with the needed resources, operational efficiencies, and management and that citizens expectations are met.

This assessment is intended to provide the municipalities with an overview of fire protection to ensure that they can evaluate these findings to provide services effectively and efficiently to the residents of both municipalities.

## **3. Methodology Used in the Study**

To understand and evaluate these issues, DCED undertook an assessment of the finances and operations of the municipalities and the fire companies.

## **4. Overview**

The municipalities and the fire companies have several in depth issues that need to be addressed:

- Regional Fire Protection
- Daytime Staffing
- Recruitment and Retention of members
- Facilities
- Duplication of common fire protection services and equipment

## 5. Recommendations

Throughout this report DCED provides evaluation and analysis of the organization, finances, and services provided by the study participants, where appropriate, makes recommendations for improvements. Major Recommendations are listed below

Major Recommendations	
	Catasauqua Borough and North Catasauqua Borough shall direct a Regionalization of the Catasauqua Fire Company and North Catasauqua Fire Company, in a cooperative manner.
	Continue to operate both Fire Companies out of Catasauqua Station 2.
	The Municipalities should review all the recommendations for operational improvements in this document and the potential investment needed to provide Fire Protection in the future. Accordingly, each should consider implementing a specific Fire Protection Tax, if needed, as permitted by the Pennsylvania Borough Code.
	Recording of all data of the various operational, response time, staffing and training components provided through all available means. All data should be managed through a Fire Incident Reporting program and analyzed monthly by the municipalities and the Fire Companies.
	The Boroughs should establish fire response and staffing benchmark performance objectives as per NFPA 1720 for the Urban area. This should be recorded and tracked through whatever data reporting system is used in the future, to evaluate if NFPA 1720 is being met.
	Consult the Intergovernmental Cooperation Handbook published by the Pennsylvania Department of Community & Economic Development regarding sharing of Fire Services.

## **Introduction**

The municipalities of Catasauqua Borough, Lehigh County and North Catasauqua Borough, Northampton County requested a regional fire protection survey in 2022.

The survey process was conducted in several ways; they are as follows:

- Meetings with the Municipal Officials of Catasauqua Borough & North Catasauqua Borough.
- Road tours of the area.
- Site visits to the Fire Stations.
- Interaction via phone and/or face to face with all parties providing Fire Service in Catasauqua and North Catasauqua.
- Promulgation of general questionnaires. This was based on the scope of services that was requested by the two municipalities from the Governor's Center for Local Government Services (GCLGS). It was then distributed to the parties providing Fire Protection. The documents were returned and used to gain further insight to the services provided.

## **Basis of Analysis**

The underlying basis of this analysis is the current composition of Municipal Fire Protection, which is two adjoining municipalities, in two adjoining counties, protected by two individual volunteer Fire Service Providers and the opportunities to improve the delivery of Fire Protection through an objective analysis.

## Municipal Overview

### **Catasauqua Borough, Lehigh County, PA**

Catasauqua (referred to colloquially as Catty) is a borough in Lehigh County, Pennsylvania, settled in 1805 and chartered as a borough in 1853. Catasauqua's population was 6,518 at the 2020 census. It is a suburb of Allentown, Pennsylvania in the Lehigh Valley. Nearby large communities include Allentown three miles (5 km) to the south and Bethlehem seven miles (11 km) to the east. Catasauqua's population was 6,568 at the 2019 census.

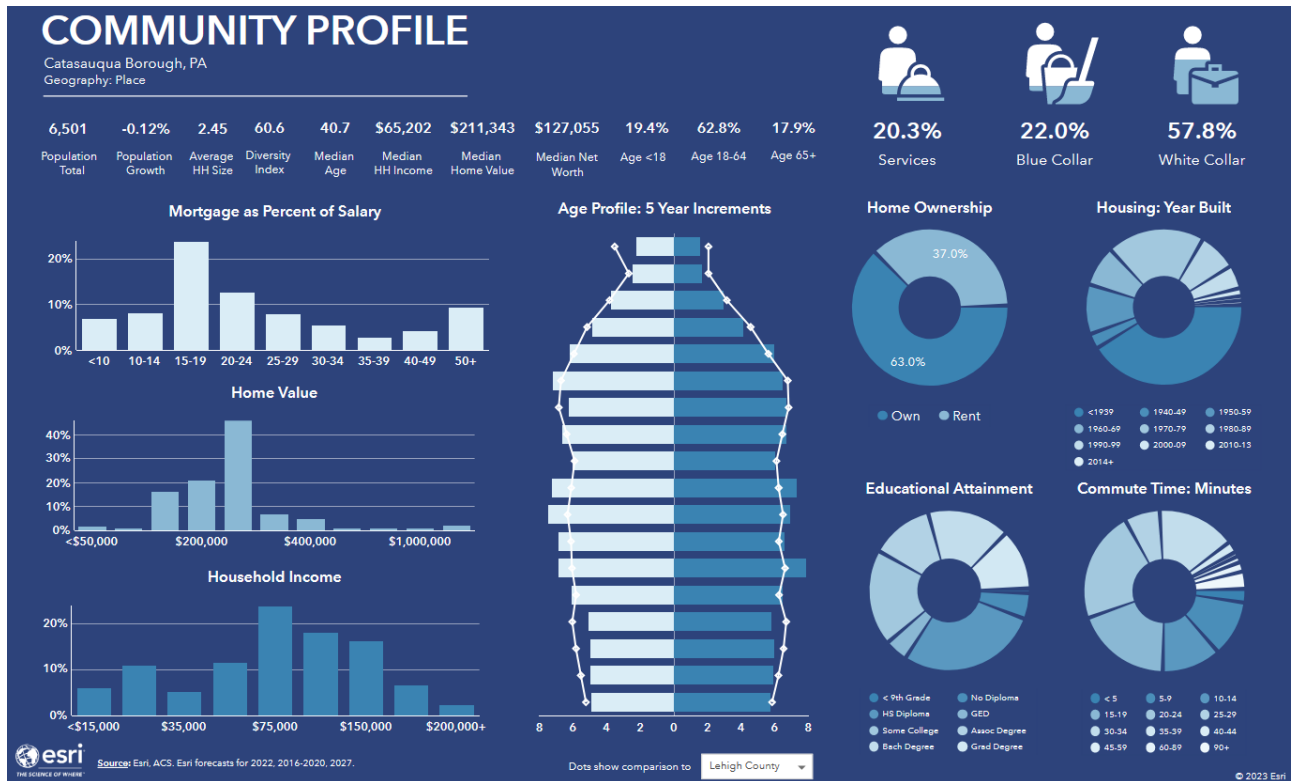
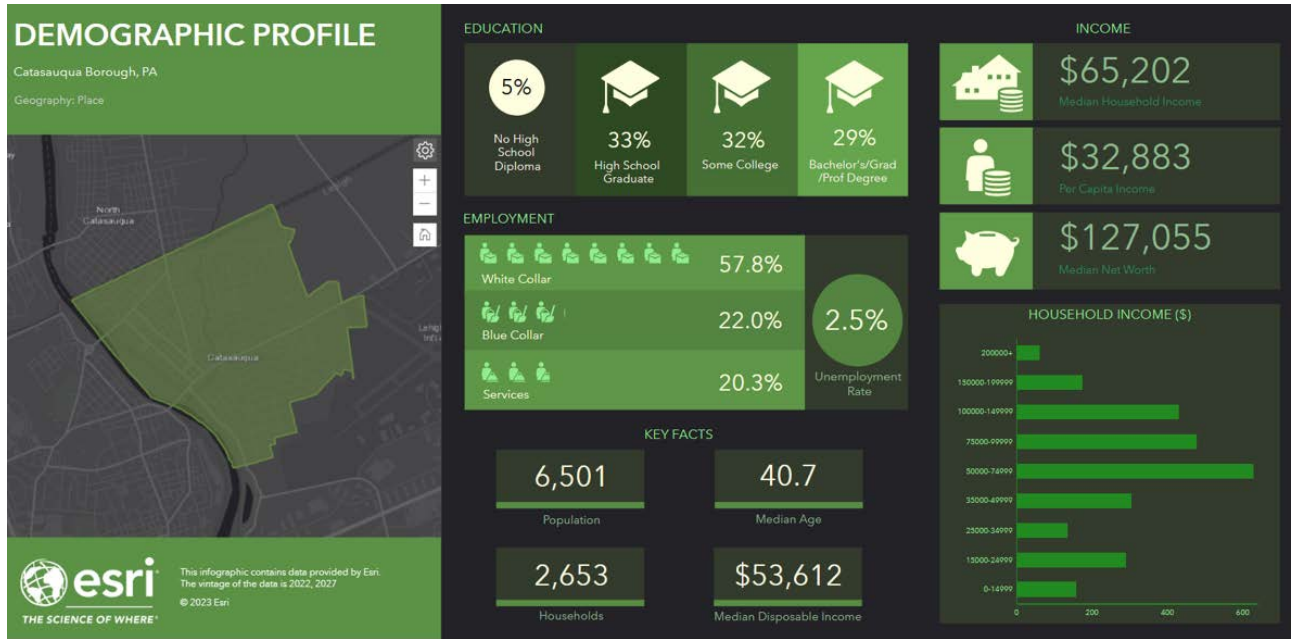
According to the United States Census Bureau, the borough has a total area of 1.3 square miles (3.4 km<sup>2</sup>), of which, 1.3 square miles (3.4 km<sup>2</sup>) of it is land and 0.04 square miles (0.10 km<sup>2</sup> or 2.31%) of it is water. The Catasauqua Creek flows through the town. The Lehigh River runs along the southwest edge of Catasauqua.

In 1839, Catasauqua was the location of the first manufactured anthracite iron in the nation.

### **Adjacent Municipalities**

North Catasauqua Borough, Northampton County to the North  
Hanover Township to the East and South  
Whitehall Township to the West

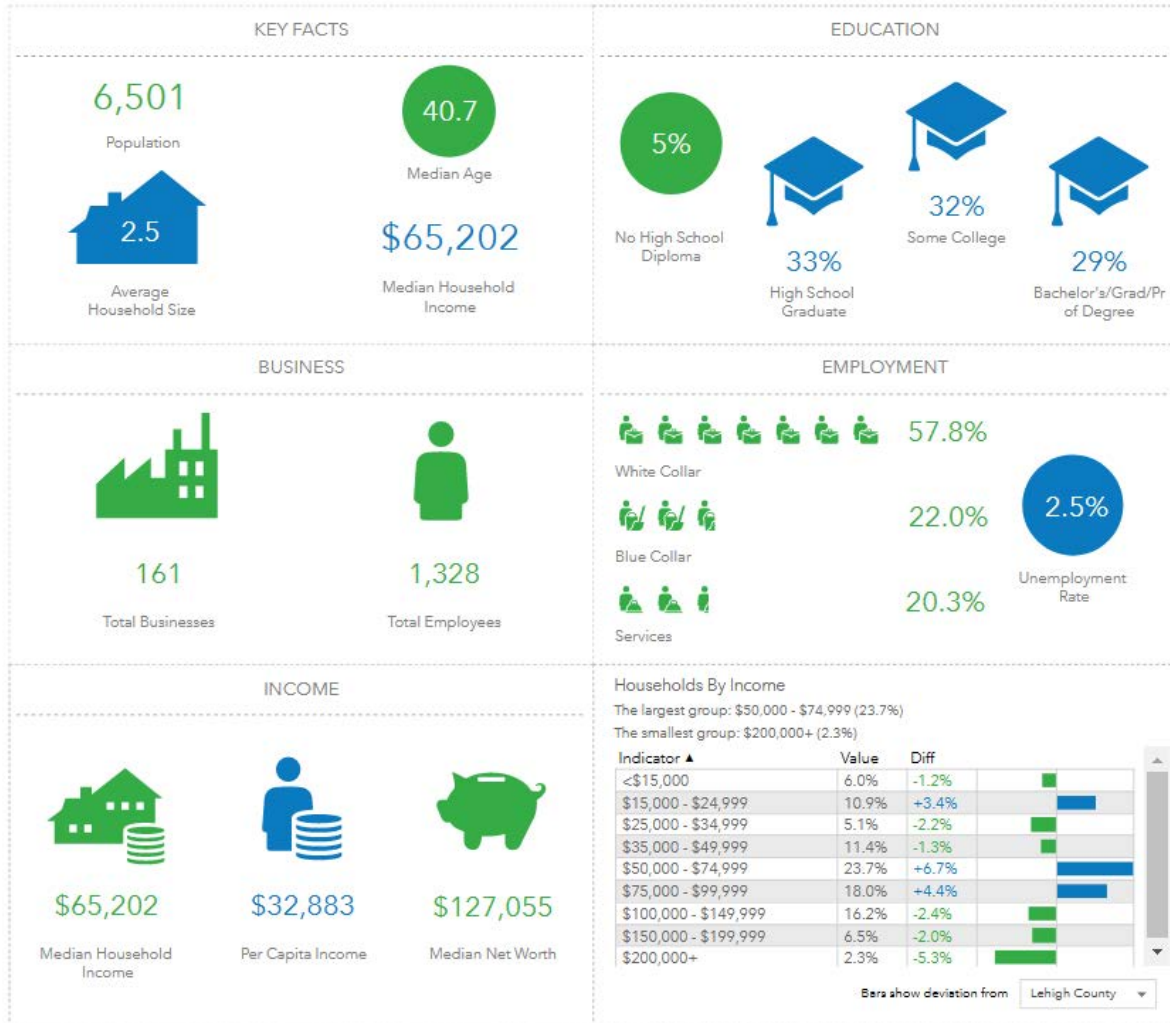
**Community Profile: Catasauqua Borough via ESRI**

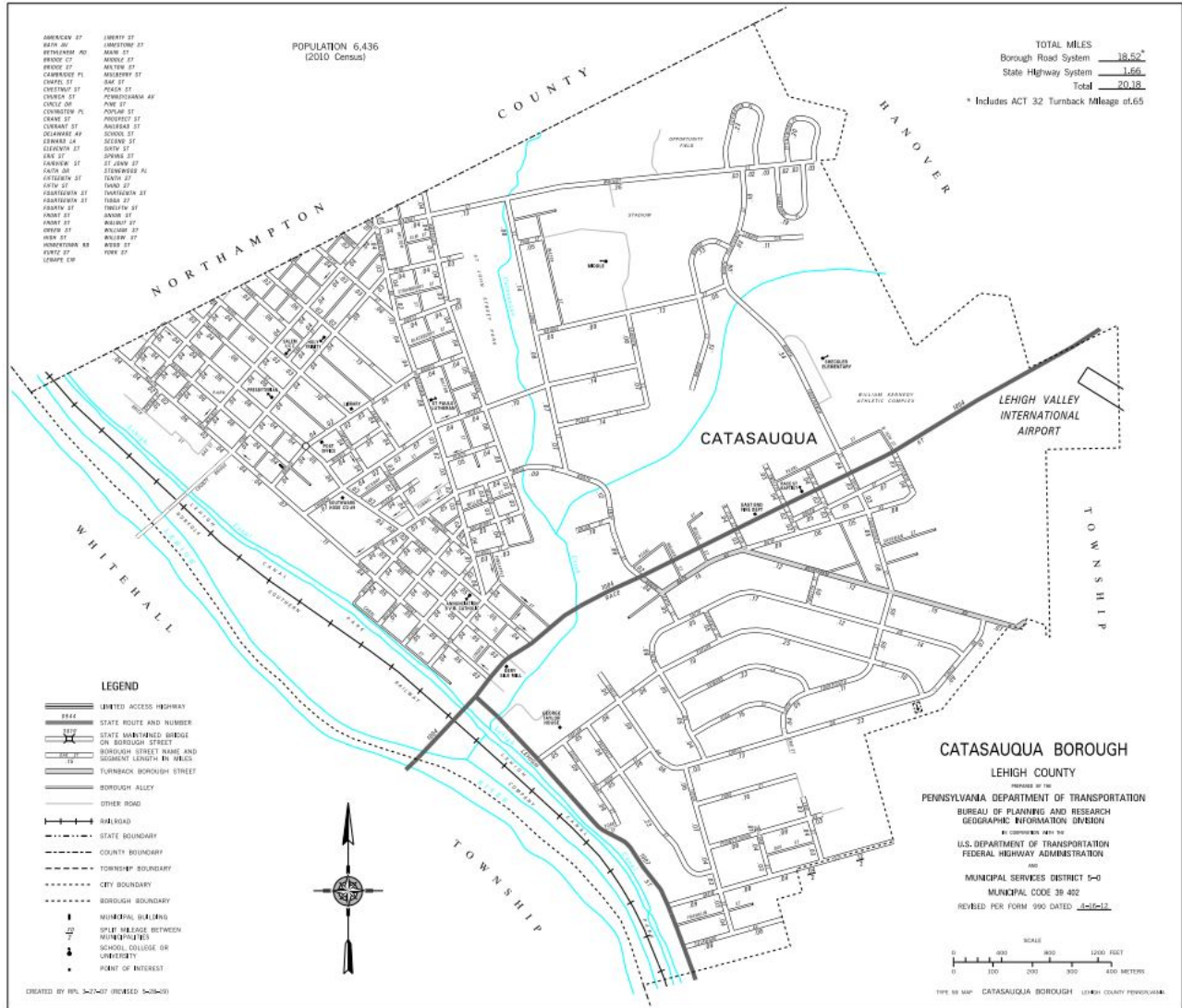


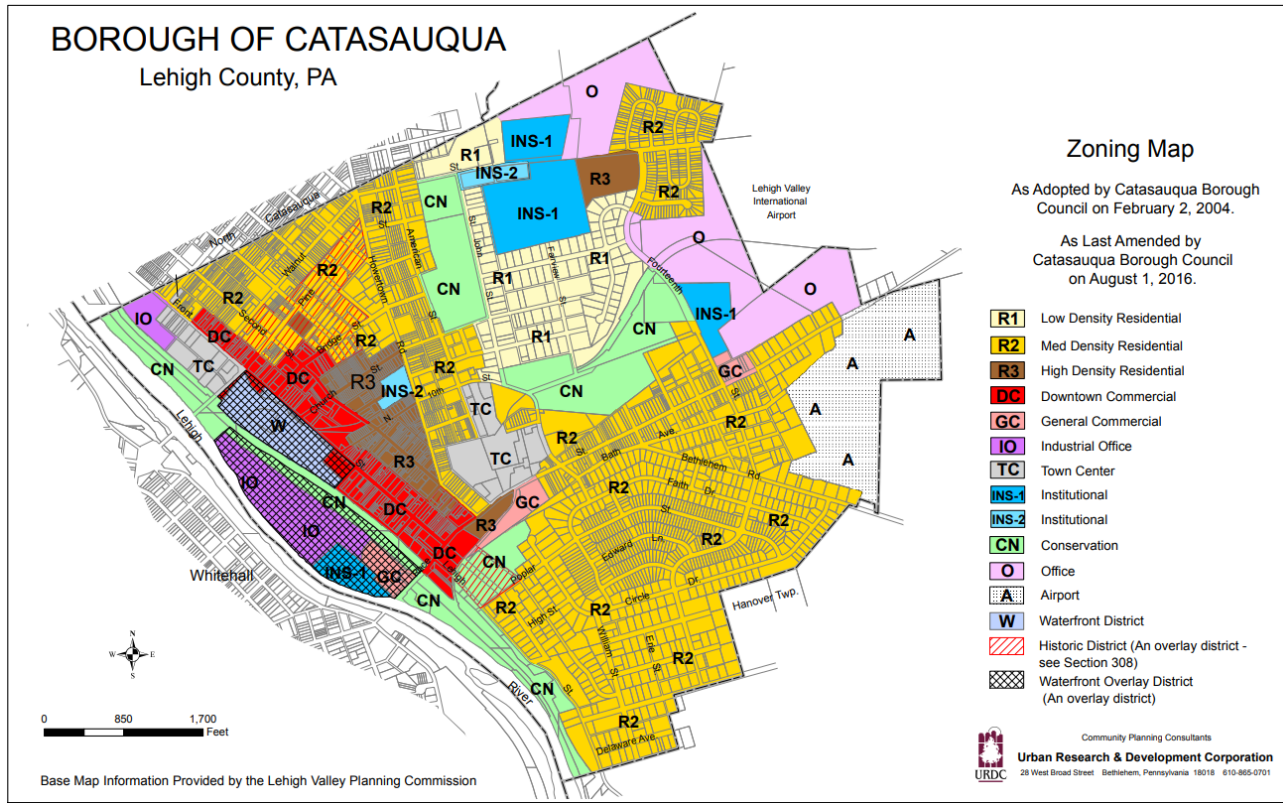


# Key Facts

Catasauqua Borough, PA  
Geography: Place







### **North Catasauqua Borough, Northampton County, PA**

North Catasauqua (referred to colloquially as North Catty) is a borough in Northampton County, Pennsylvania. The borough is part of the Lehigh Valley metropolitan area, which has a population of 861,899 and is the 68th most populated metropolitan area in the U.S. as of the 2020 census.

The borough was founded in 1907 from a portion Allen Township. The population of North Catasauqua was 2,831 at the 2020 census.

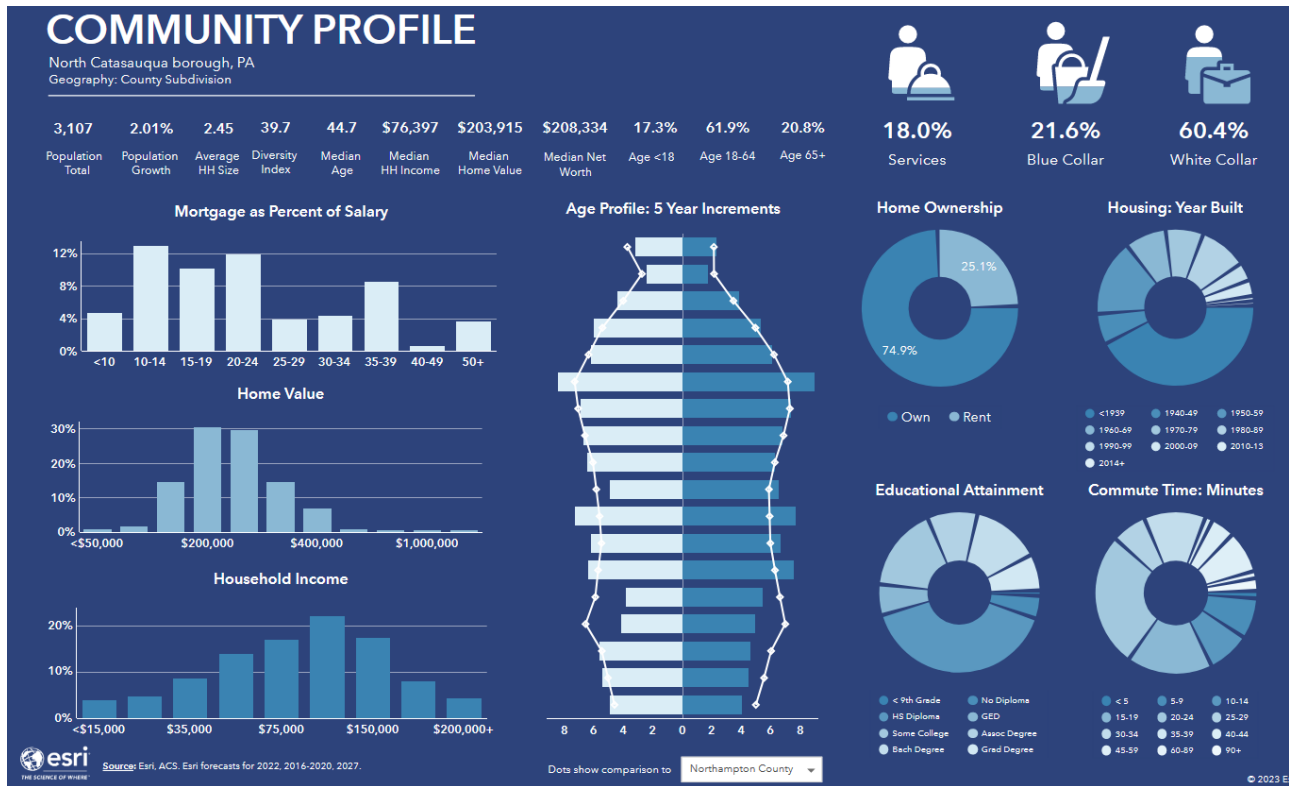
According to the United States Census Bureau, the borough has a total area of 0.8 square miles (1.9 km<sup>2</sup>), of which, 0.7 square miles (1.9 km<sup>2</sup>) of it is land and 0.04 square miles (0.1 km<sup>2</sup>) of it (2.67%) is water.

The Lehigh River and Lehigh Canal and towpath provides the western border of the borough.

#### **Adjacent Municipalities**

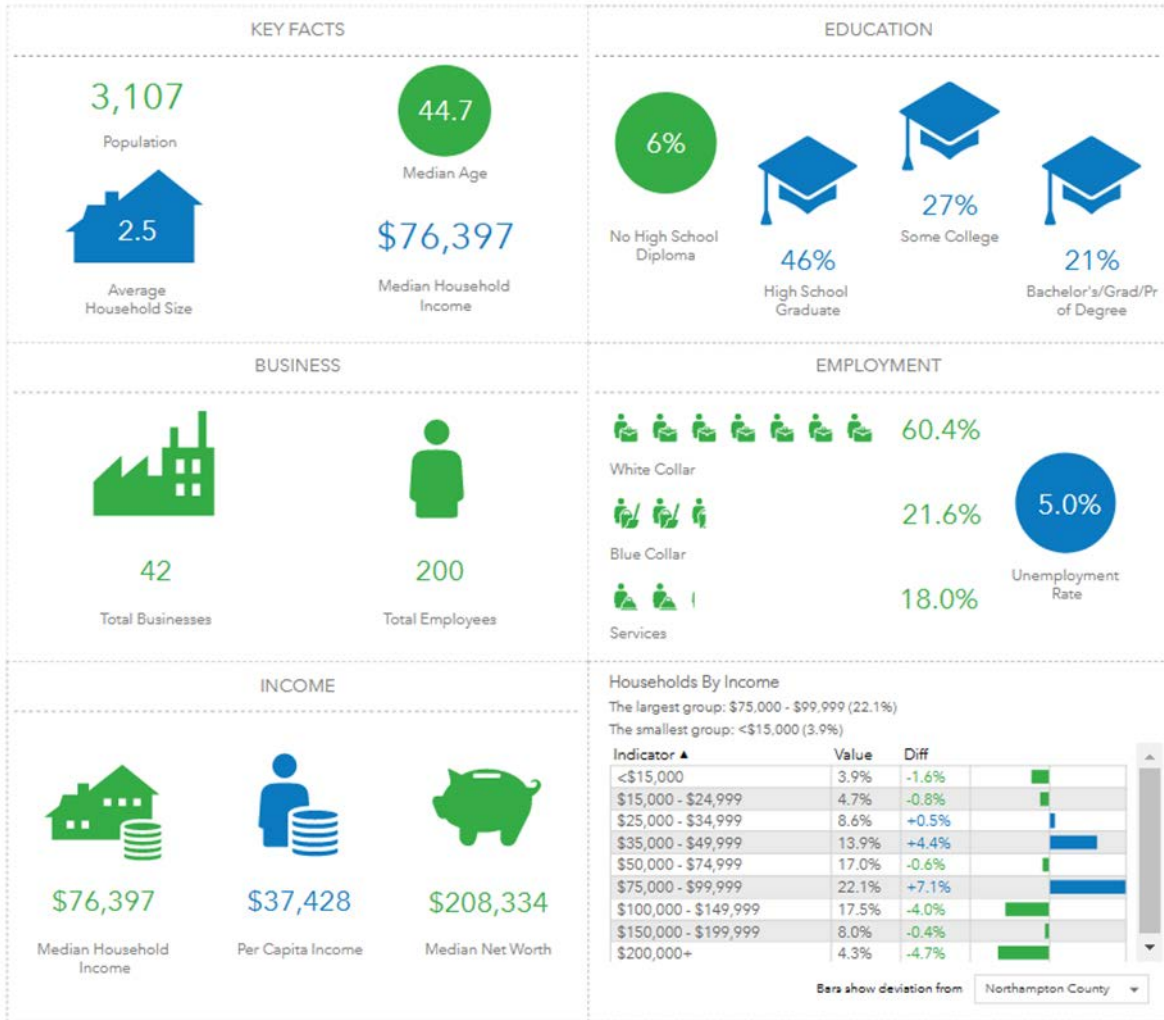
- Northampton Borough to the north
- Hanover Township to the northeast
- Catasauqua Borough, Lehigh County to the south
- Whitehall Township, Lehigh County to the west

**Community Profile: North Catasauqua Borough via ESRI**



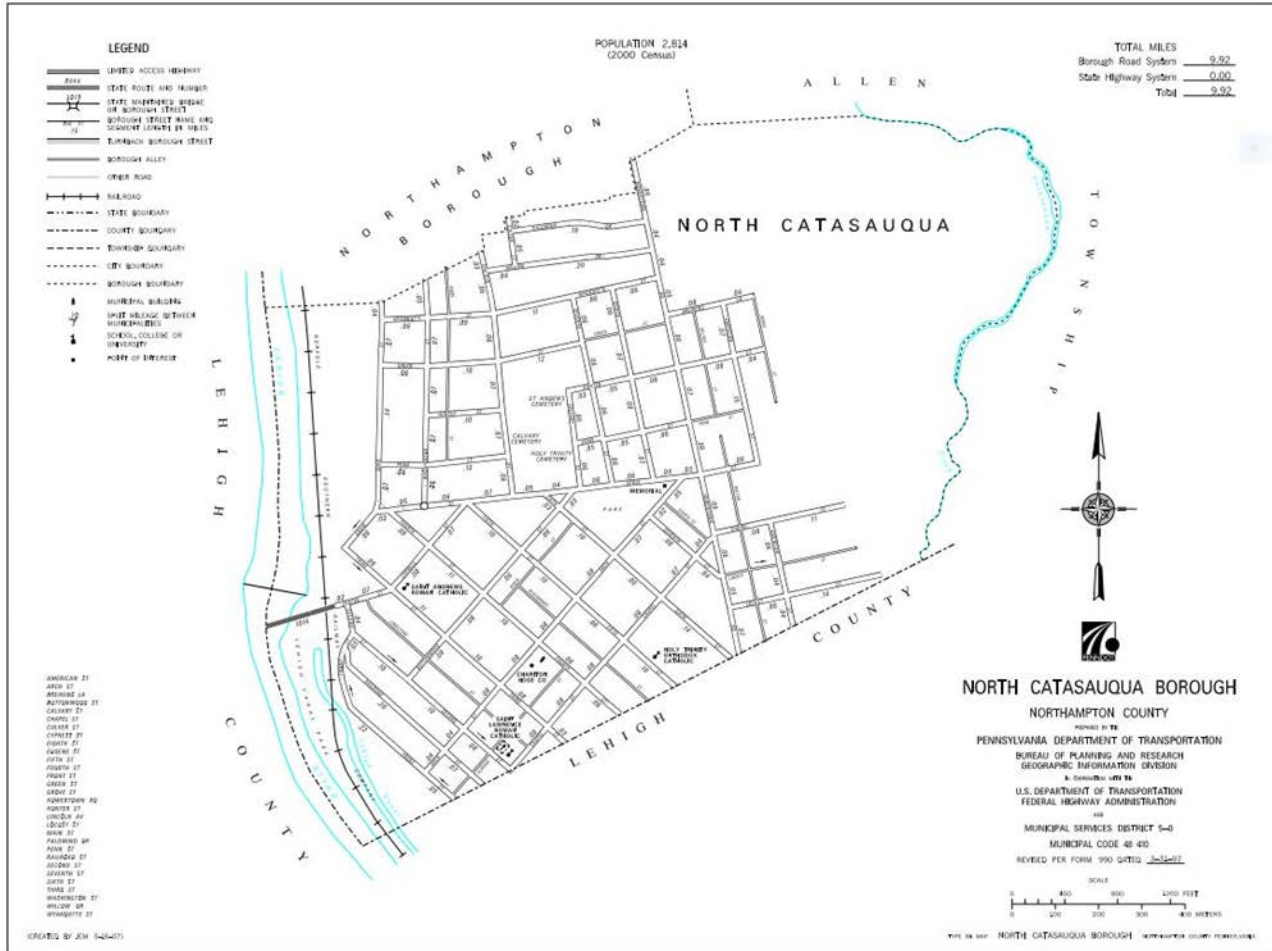
# Key Facts

North Catasauqua borough, PA  
Geography: County Subdivision



This infographic contains data provided by Esri, Esri-Data Axle. The vintage of the data is 2022, 2027.

© 2023 Esri



**NORTH CATASAUQUA  
ZONING MAP**



\* Zoning Information from LVPC, March 2013  
Date Revised: June 6, 2016  
J:\GIS\North Catv\Projects\Zoning\Zoning Map - Revised June 6, 2016.mxd



## **Borough Code: Specific Powers – Fire Protection/EMS**

### **§ 1202. Specific powers.**

The powers of the borough shall be vested in the council. In the exercise of any specific powers involving the enactment of an ordinance or the making of any regulation, restriction or prohibition, the borough may provide for enforcement and penalties for violations. The specific powers of the borough shall include the following:

(56) To ensure that fire and emergency medical services are provided within the borough by the means and to the extent determined by the borough, including the appropriate financial and administrative assistance for these services. The borough shall consult with fire and emergency medical services providers to discuss the emergency services needs of the borough. The borough shall require any emergency services organization receiving borough funds to provide to the borough an annual itemized listing of all expenditures of these funds before the borough may consider budgeting additional funding to the organization.

## Fire Protection Funding

This presents the funding by each municipality in terms of the tax structure and budget.

**Catasauqua Borough:** Does not assess a Fire Tax. Fire Protection/EMS is funded from the General Fund with the Real Estate Tax Millage Rate under the Pennsylvania Borough Code.

**North Catasauqua Borough:** Does not assess a Fire Tax. Fire Protection/EMS is funded from the General Fund with the Real Estate Tax Millage Rate under the Pennsylvania Borough Code.

### CHAPTER 13 TAXATION AND FINANCE

#### § 1302. Tax levy.

(a) **Authority.**--The council of the borough shall have power, by ordinance, to levy and collect annually a tax not exceeding 30 mills for general borough purposes, unless the council by majority action, upon due cause shown by resolution, petitions the court of common pleas, in which case the court may order a rate of not more than five mills additional to be levied and in addition any of the following taxes:

(1) An annual tax sufficient to pay interest and principal on any indebtedness incurred pursuant to 53 Pa.C.S. Pt. VII Subpt. B (relating to indebtedness and borrowing) or any prior or subsequent act governing the incurrence of indebtedness of the borough.

(2) To provide for pensions, retirement or the purchase of annuity contracts for borough employees, not exceeding one-half mill.

(3) To defray the cost and expenses of caring for shade trees as provided in section 2720.1 (relating to maintenance by borough and tax levy) and the expense of publishing the notice referred to in section 2720.1, not exceeding one-tenth mill.

(4) For lighting and illuminating the streets, highways and other public places, not exceeding eight mills.

(5) For gas, water and electric, not exceeding eight mills, additional millage permitted only following a favorable referendum on the matter held in accordance with the election laws of this Commonwealth.

(6) For the purchase of fire engines, fire apparatus and fire hose for the use of the borough or for assisting any fire company in the borough in the purchase, renewal or

repair of any of its fire engines, fire apparatus or fire hose, for the purposes of making appropriations to fire companies both within and without the borough and of contracting with adjacent municipalities or volunteer fire companies in adjacent municipalities for fire protection, for the training of fire personnel and payments to fire training schools and centers or for the purchase of land upon which to erect a firehouse, or for the erection and maintenance of a firehouse or fire training school and center, not exceeding three mills. The following shall apply:

(i) The borough may appropriate up to one-half, but not to exceed one mill, of the revenue generated from a tax under this paragraph for the purpose of paying salaries, benefits or other compensation of fire suppression employees of the borough or a fire company serving the borough.

(ii) If an annual tax for the purposes specified in this paragraph is proposed to be set at a level higher than three mills, the question shall be submitted to the voters of the borough, and the county board of elections shall frame the question in accordance with the election laws of this Commonwealth for submission to the voters of the borough.

(7) For building a firehouse, fire training school and center, lockup or municipal building, not exceeding two mills, additional millage permitted only following a favorable referendum on the matter held in accordance with the election laws of this Commonwealth.

(8) To establish and maintain a local library or to maintain or aid in the maintenance of a local library established by deed, gift or testamentary provision, for the use of the residents of the borough, in accordance with 24 Pa.C.S. Ch. 93 (relating to public library code).

(9) For the purpose of supporting ambulance, rescue and other emergency services serving the borough, not to exceed one-half mill, except as provided in subsection (e). The borough may appropriate up to one-half of the revenue generated from a tax under this paragraph for the purpose of paying salaries, benefits or other compensation of employees of the ambulance, rescue or other emergency service.

(10) An annual tax sufficient for the purpose of maintaining and operating recreation places or for paying the borough's share of a joint action with one or more political subdivisions, in accordance with section 2701 (relating to general powers).

***Recommendation: Catasauqua Borough and North Catasauqua Boroughs should review the recommendations in this document and the potential investment needed to provide Fire Protection in the future as permitted by the Pennsylvania Borough Code.***

## Fire Company Overview

### **Catasauqua Fire Company**

Lehigh County Station 2 is located at 90 Bridge Street, Catasauqua, PA

Membership Station 2:

- Interior - 22 – 20 at FF1/12 at FF 2
- Exterior/Driver - 5
- Junior - 2
- Social/Admin. - 5

### **North Catasauqua Fire Company**

Northampton County Station 18 operates out of 90 Bridge Street, Catasauqua, since May 22, 2022

Membership Station 18:

- Interior - 9
- Junior - 0

ISO Rating

Catasauqua: 03 as of 2022

North Catasauqua : 03 as of 2022

The primary goals of the Fire Companies are to:

- Reduce and prevent the loss of life and property damage
- Improve the quality of life for residents by providing public education and ongoing training for residents and firefighters.

## Evaluation of Fire Services

Local governments and emergency services organizations have used cooperative partnerships to improve service delivery by better coordinating resources. Catasauqua and North Catasauqua Fire Companies have a history of cooperation using automatic aid for fire and rescue responses.

### **A. Problem Statement**

As demands for service and costs continue to increase, and staffing decreases, innovative strategies should be explored to ensure a sustainable quality service.

### **B. Purpose Statement**

The purpose of this report is to outline the current fire rescue system in Catasauqua Borough, Lehigh County and North Catasauqua Borough, Northampton County Pennsylvania and provide suggestions to help create a new cooperative partnership.

### **C. Introduction to Cooperation**

Why should organizations cooperate?

It is important to understand interdependence in today's fire and emergency services. Our communities blend together across defined municipal boundaries. Every day, mutual aid is provided and received for fires, vehicle crashes, medical emergencies, and a variety of other calls for citizens in need of a rapid, caring response. According to the Intergovernmental Cooperation Handbook published by the Pennsylvania Department of Community & Economic Development, municipalities are not walls or barricades.

They are interdependent because of economic factors, physical features, and social groupings. It has been proven that cooperation will lead to better efficiency and effectiveness in the provision of services. As communities grow, so does the need for new and expanded services.

Citizens will expect more from their government and fire department. Cooperation is the future; the question is whether it is in your department's future.

## How to make cooperation work?

The intergovernmental cooperation handbook recommends that the process be as inclusive as possible from the start. The process should involve members and leaders of the fire departments, elected officials, community members, and municipal staff. It is essential to communicate effectively. If members of the process are not kept informed, decisions will be made on assumptions rather than facts. To maintain a cooperative spirit, it is important to be proactive, flexible, patient, and to think regionally.

### **D. The Setting – Catasauqua Borough, North Catasauqua Borough**

Catasauqua is in Lehigh County. North Catasauqua is in Northampton County.

Catasauqua and North Catasauqua operate under the Commonwealth of Pennsylvania Borough Code.

In each borough, there are seven (7) council members and a mayor. A Borough Administrator or Borough Manager handles the day-to-day operations.

### **E. Contemporary Analysis.**

Internal self-analysis by the fire companies have identified needs, strengths, and weaknesses.

## **Station 2 – Catasauqua Fire Company**

### **The top three needs facing the department include:**

1. Future Members
2. Future Apparatus Purchases
3. The need for increased interest during down time.

### **The top three strengths include:**

1. Fast/Efficient Response
2. Younger membership. Detailed SOPs to help control actions.
3. National Pro Board Certificate is higher than in the past.

### **The top three weaknesses include:**

1. One-piece responses sometimes leave members behind.
2. Lower responses in the daytime.
3. Lack of activity during downtime.

## **Station 18 – North Catasauqua Fire Company**

Station 18 provided the answers below, although the top three were asked for.

### **The needs facing the department include:**

1. Manpower

### **The strengths include:**

1. Young Crew

### **The weaknesses include:**

1. Manpower



The companies were asked to provide their thoughts consolidating, merging, regionalizing and/or sharing services.

**Station 2**

**Pros**

More members and apparatus on initial alarm.  
Shared workload

**Cons**

Personality/culture conflicts  
Increase in call volume  
Increased training requirements

**Station 18**

**Pros**

Help with manpower

**Cons**

Did not identify any

The companies were asked if they could continue to operate individually.

**Station 2:**

Currently holding our own. Future diminishment due to aging, family, job commitments and training requirements.

**Station 18:**

No. Due to Lack of Manpower

**Run Data**

**Catasauqua Fire Department**

Catasauqua, PA

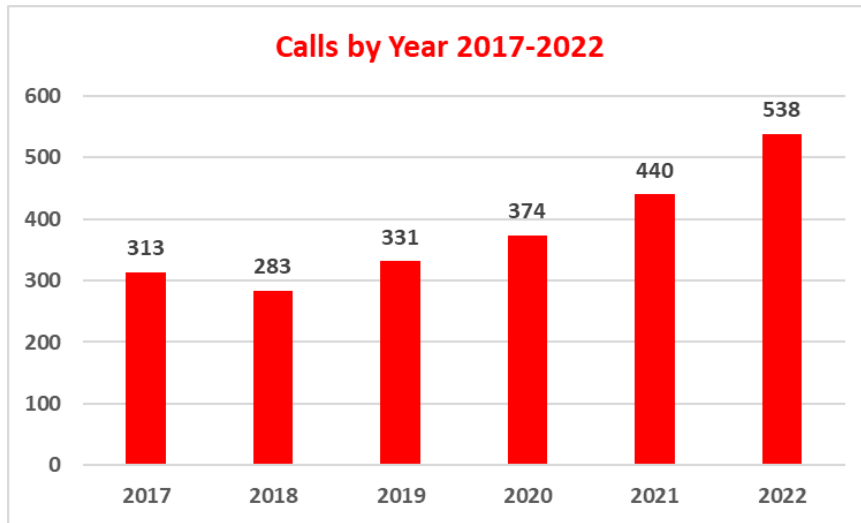
This report was generated on 1/4/2023 11:44:20 AM



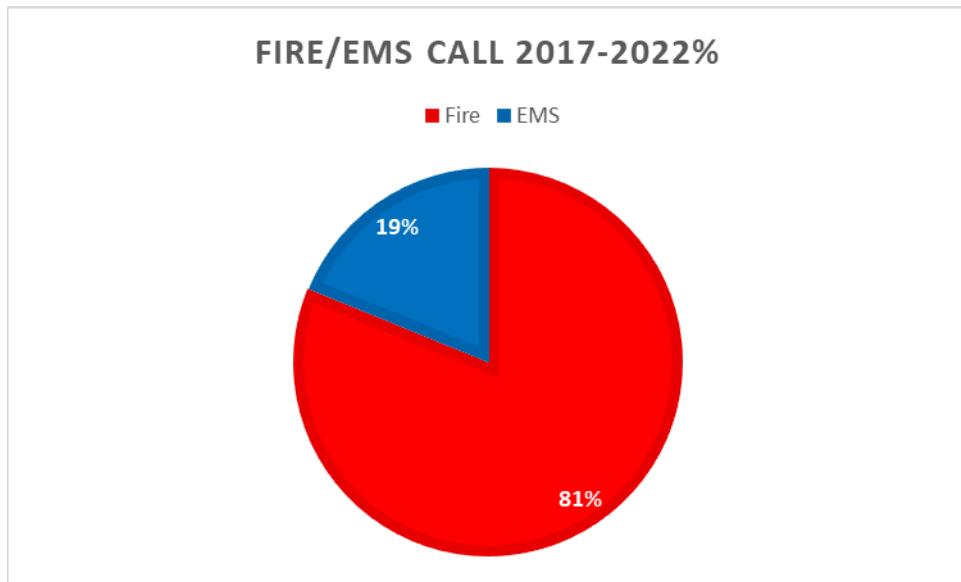
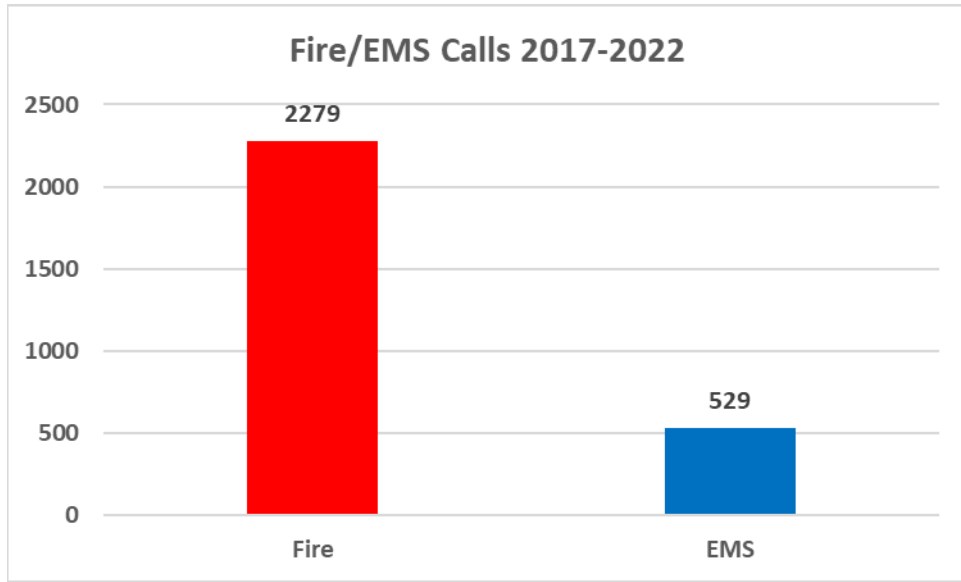
**Incident Count for All Calls (Reviewed) for Agency for Date Range**

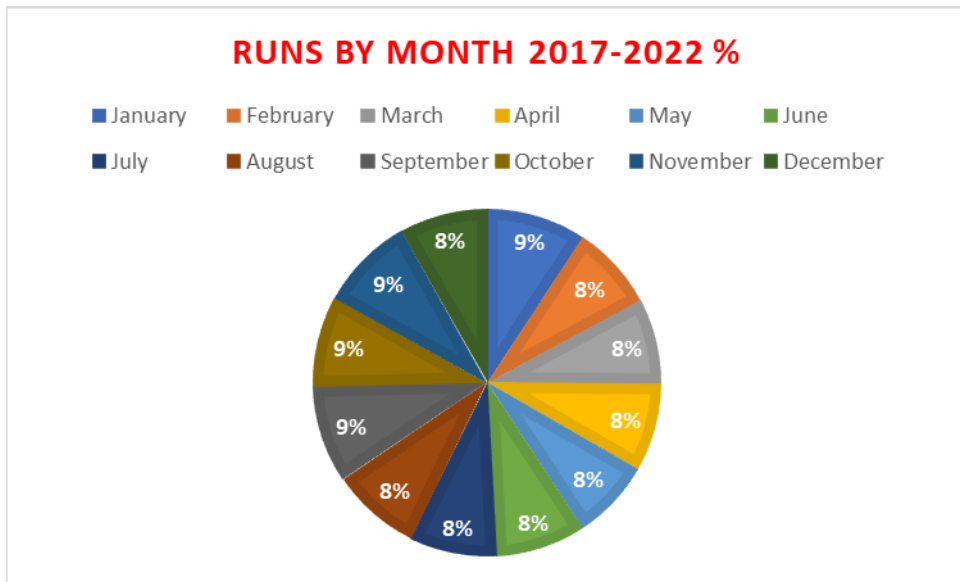
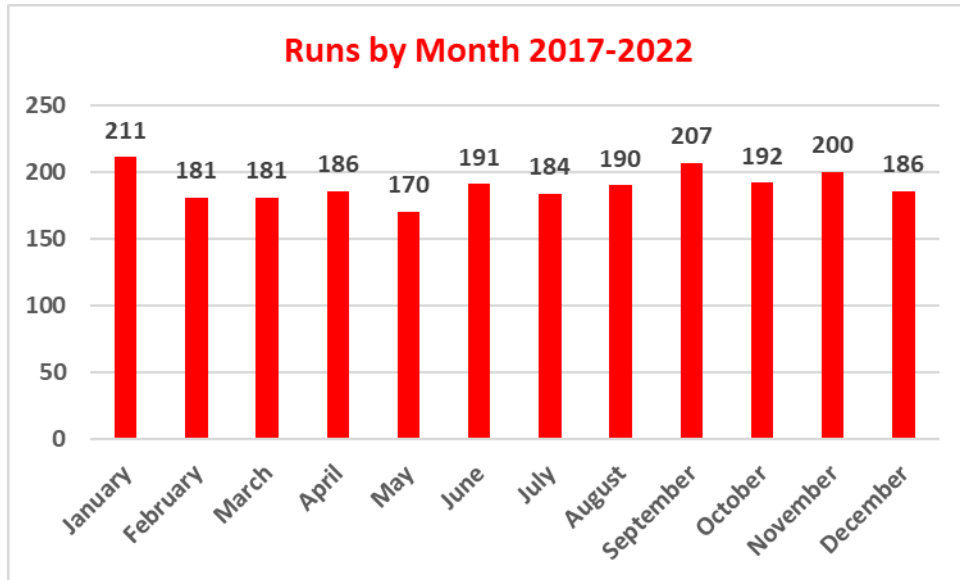
Start Date: 01/01/2017 | End Date: 12/31/2022

AGENCY	# INCIDENTS
Catasauqua Fire Department	2279



**Busiest Year: 2022 538 Runs/24%**





**Busiest Month: January 211 Runs/9%**

## Catasauqua Fire Department

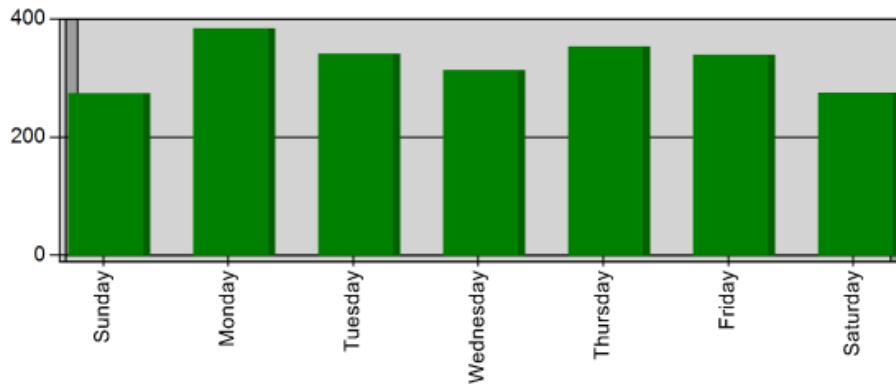
Catasauqua, PA

This report was generated on 1/4/2023 2:45:45 PM



### Incidents by Day of the Week for Date Range

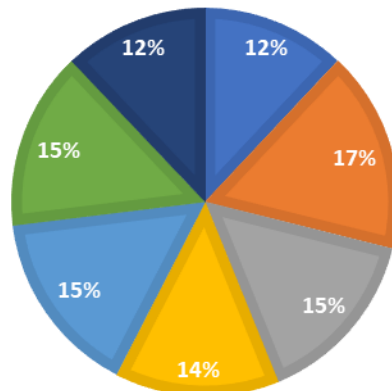
Start Date: 01/01/2017 | End Date: 12/31/2022



DAY OF THE WEEK	# INCIDENTS
Sunday	274
Monday	384
Tuesday	341
Wednesday	313
Thursday	353
Friday	339
Saturday	275
<b>TOTAL</b>	<b>2279</b>

### RUNS BY DAY OF WEEK 2017-2022 %

■ Sunday ■ Monday ■ Tuesday ■ Wednesday ■ Thursday ■ Friday ■ Saturday



**Busiest Day of Week: Monday 384 Runs/17%**

**2017-2022**

**Catasauqua Fire Department**

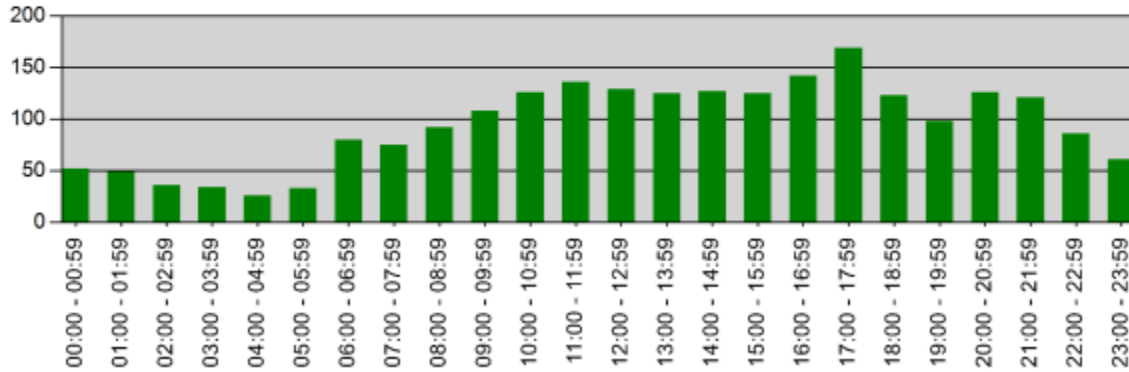
Catasauqua, PA

This report was generated on 1/4/2023 2:52:07 PM



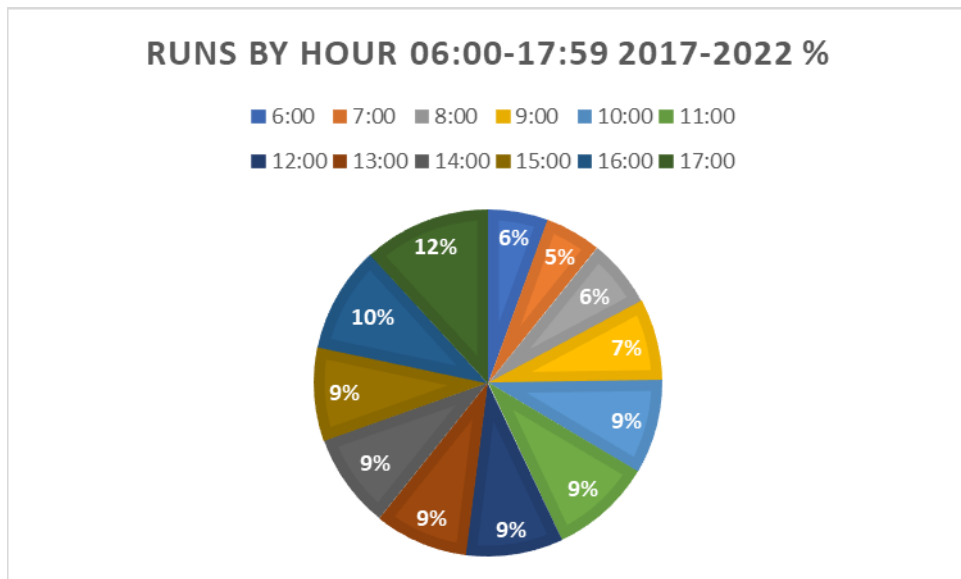
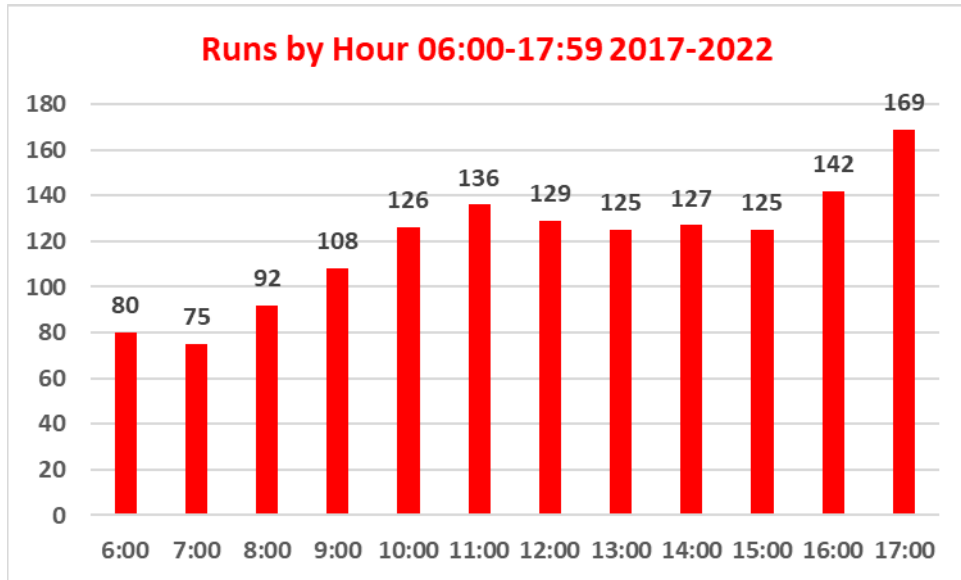
**Incidents by Hour for Date Range**

Start Date: 01/01/2017 | End Date: 12/31/2022

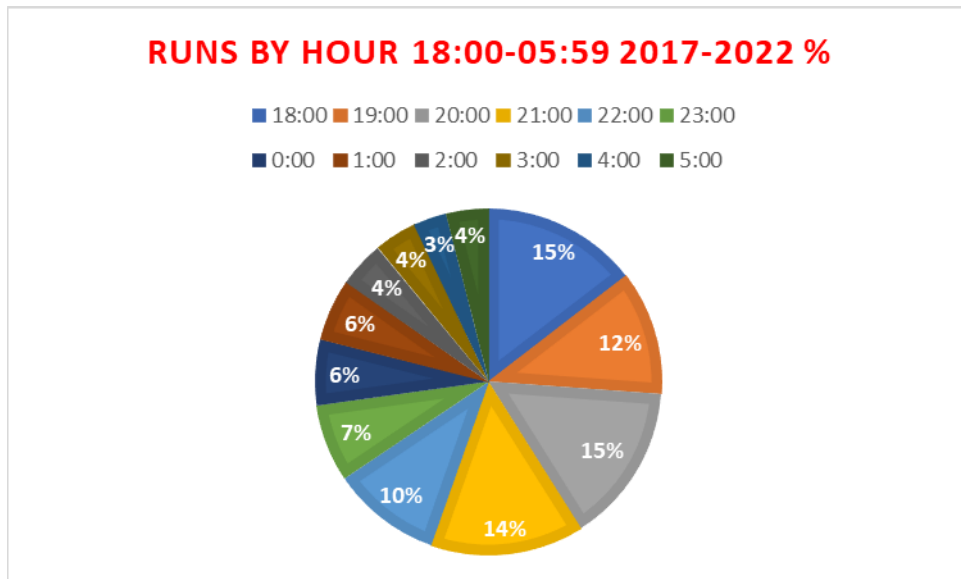
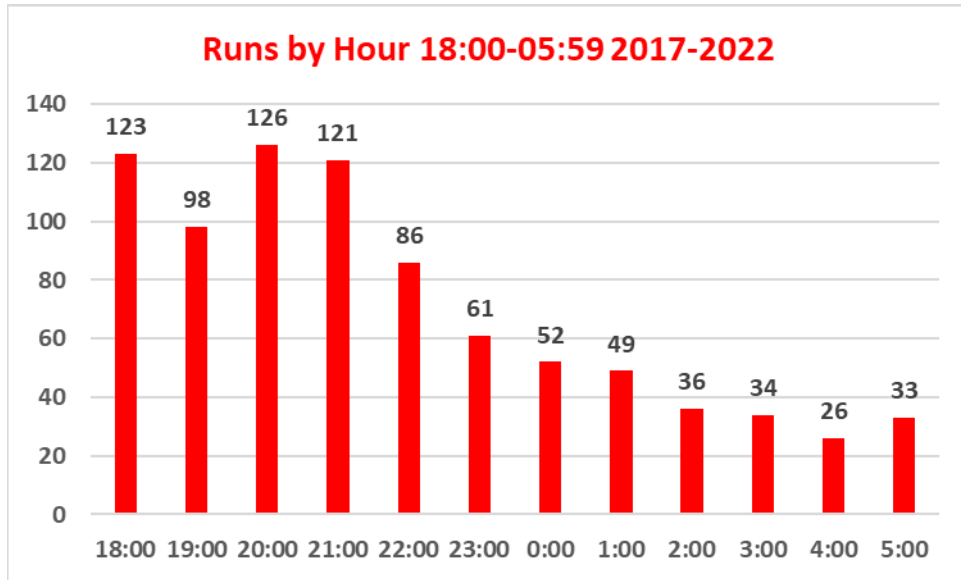


HOURLY	# of CALLS
00:00 - 00:59	52
01:00 - 01:59	49
02:00 - 02:59	36
03:00 - 03:59	34
04:00 - 04:59	26
05:00 - 05:59	33
06:00 - 06:59	80
07:00 - 07:59	75
08:00 - 08:59	92
09:00 - 09:59	108
10:00 - 10:59	126
11:00 - 11:59	136
12:00 - 12:59	129
13:00 - 13:59	125
14:00 - 14:59	127
15:00 - 15:59	125
16:00 - 16:59	142
17:00 - 17:59	169
18:00 - 18:59	123
19:00 - 19:59	98
20:00 - 20:59	126
21:00 - 21:59	121
22:00 - 22:59	86
23:00 - 23:59	61

**2017-2022**



**Busiest Hour 06:00-17:59: 17:00 169 Runs/12%**



**Busiest Hour 18:00-05:59: 20:00 126 Runs/15%**



## Catasauqua Fire Department

Catasauqua, PA

This report was generated on 1/23/2023 3:29:21 PM



### Mutual or Automatic Aid Given by FDID for Incident Type for Date Range

Incident Type(s): All Incident Types | Start Date: 01/01/2017 | End Date: 12/31/2022

**FDID: 48043 - North Catasauqua Fire Department**

Count of Calls for FDID 48043 - North Catasauqua Fire Department : 161

**7% of Total Calls 2017-2022**

## Catasauqua Fire Department

Catasauqua, PA

This report was generated on 1/23/2023 6:39:04 PM



### Mutual or Automatic Aid Received for Date Range

Start Date: 01/01/2017 | End Date: 12/31/2022

**FDID: 48043 - North Catasauqua Fire Department**

**FDID: 48043 - Total Calls: 138**

**6% of Total Calls 2017-2022**

## North Catasauqua Fire Company

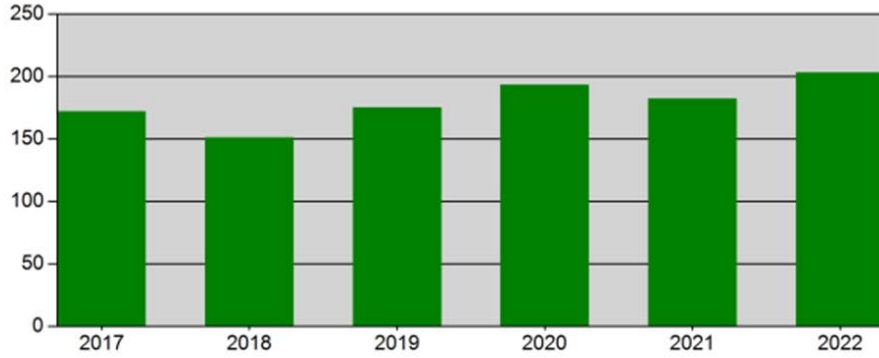
North Catasauqua, PA

This report was generated on 1/5/2023 1:05:30 PM



### Incidents by Year for Year Range

StartYear: 2017 | EndYear: 2022

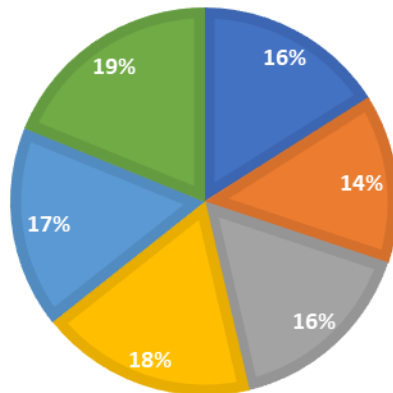


YEAR	INCIDENTS
2017	172
2018	151
2019	175
2020	193
2021	182
2022	203

**Total 1,076**

### RUNS BY YEAR 2017-2022 %

■ 2017 ■ 2018 ■ 2019 ■ 2020 ■ 2021 ■ 2022



**Busiest Year: 2022 203 Runs/19%**

## North Catasauqua Fire Company

North Catasauqua, PA

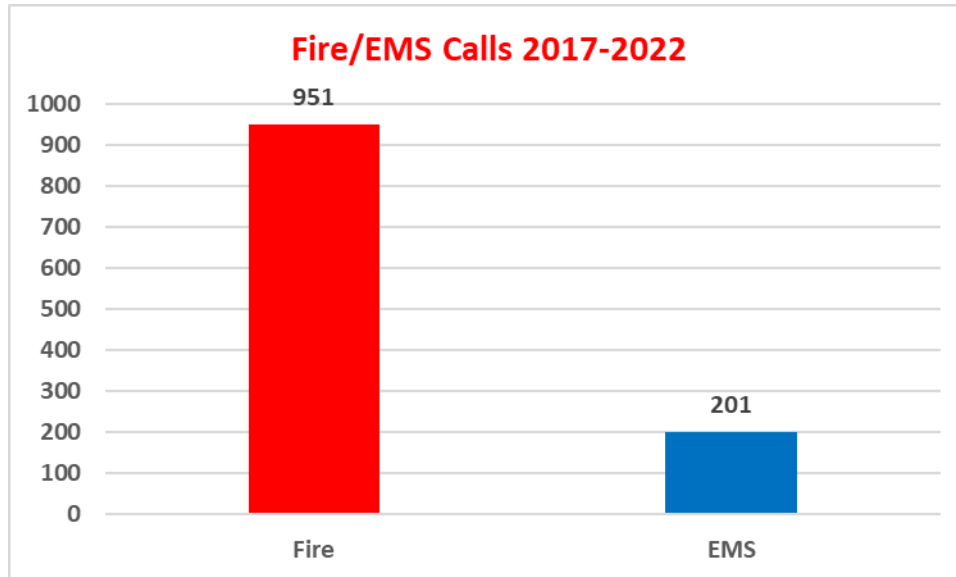
This report was generated on 1/5/2023 1:41:32 PM



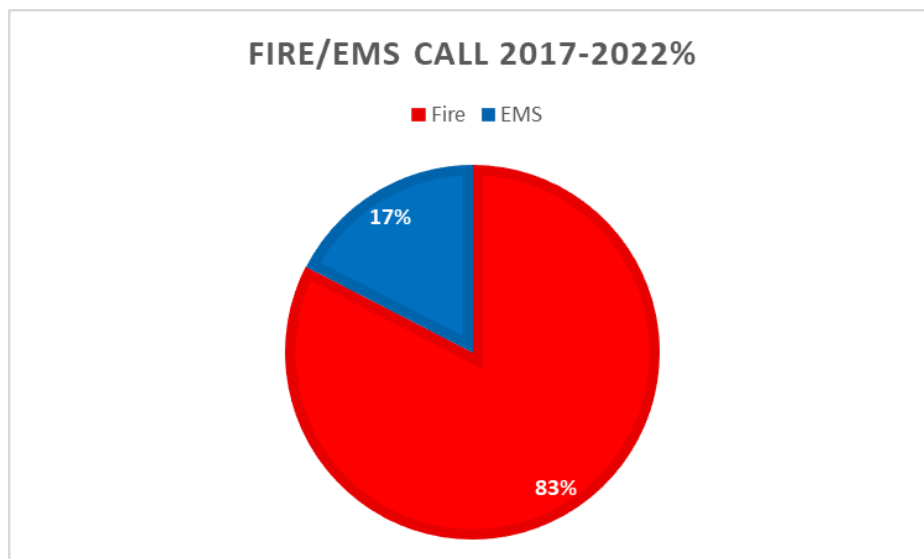
### Incident Count for All Calls (Reviewed) for Agency for Date Range

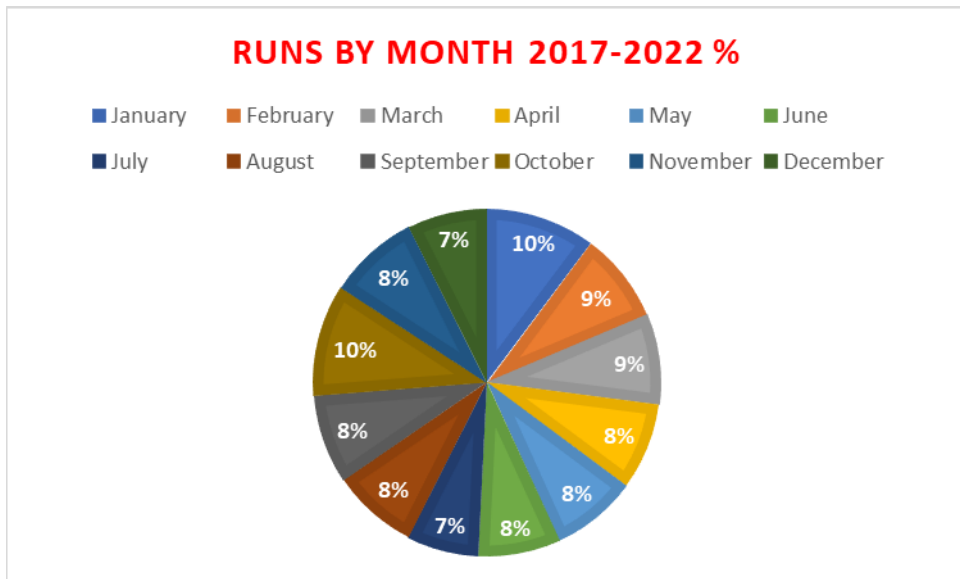
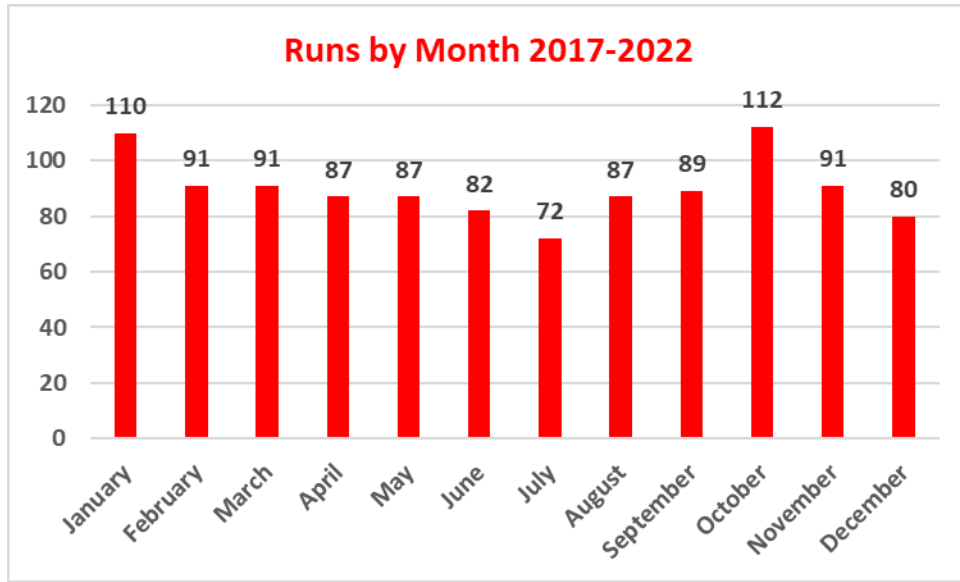
Start Date: 01/01/2017 | End Date: 12/31/2022

AGENCY	# INCIDENTS
North Catasauqua Fire Company	1076



There is a 76-call discrepancy; 1,152 in this data set, vs. 1,076 in all other data sets that is unexplained.





**Busiest Month: October 112 Runs/10%**

## North Catasauqua Fire Company

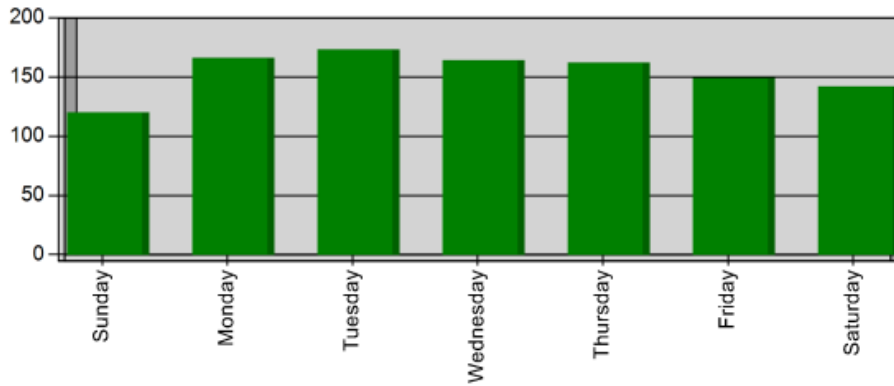
North Catasauqua, PA

This report was generated on 1/16/2023 4:31:58 PM



### Incidents by Day of the Week for Date Range

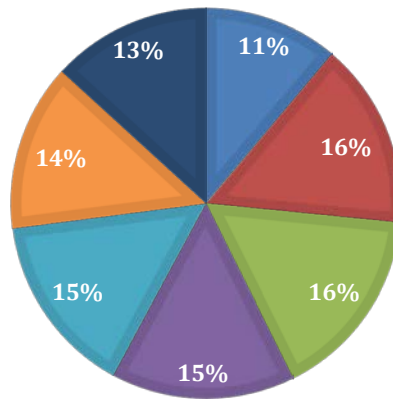
Start Date: 01/01/2017 | End Date: 12/31/2022



DAY OF THE WEEK	# INCIDENTS
Sunday	120
Monday	166
Tuesday	173
Wednesday	164
Thursday	162
Friday	149
Saturday	142
<b>TOTAL</b>	<b>1076</b>

### RUNS BY DAY 2017-2022 %

■ Sunday ■ Monday ■ Tuesday ■ Wednesday ■ Thursday ■ Friday ■ Saturday



**Busiest Day of Week: Tuesday 173 Runs/16%**

## North Catasauqua Fire Company

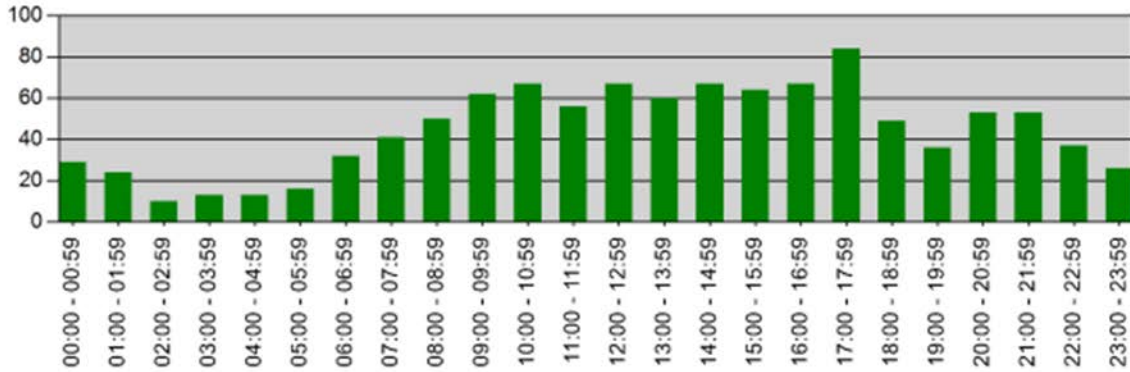
*North Catasauqua, PA*

This report was generated on 1/16/2023 4:51:11 PM

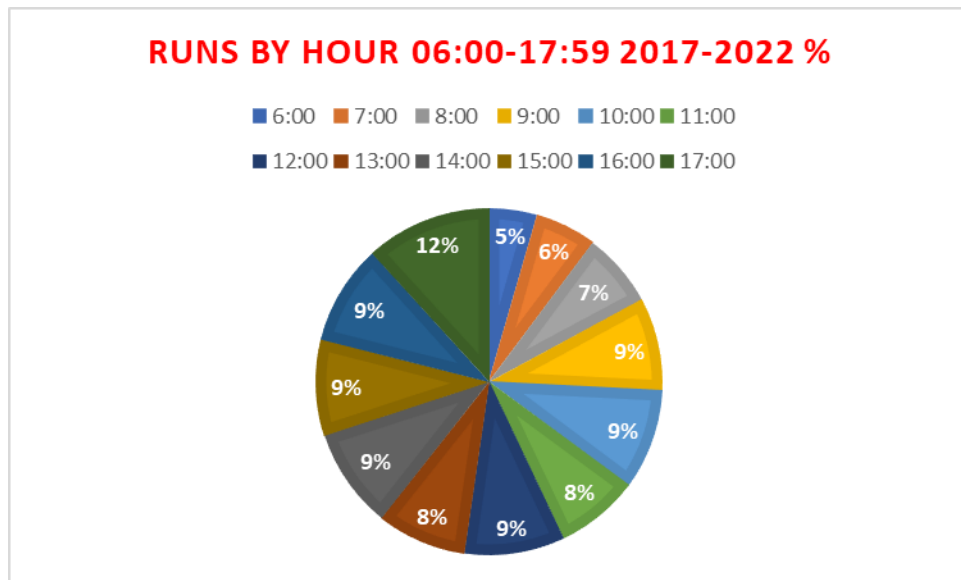
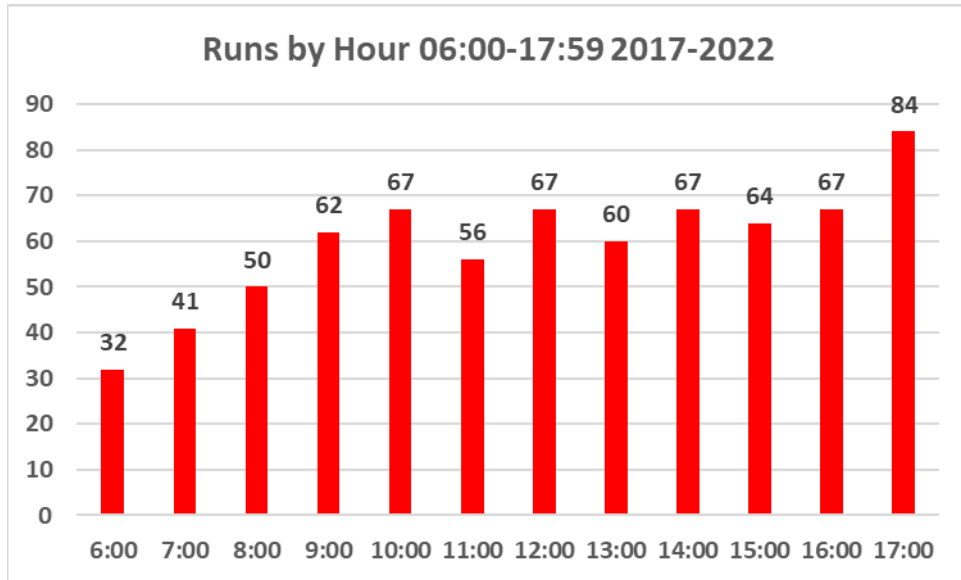


### Incidents by Hour for Date Range

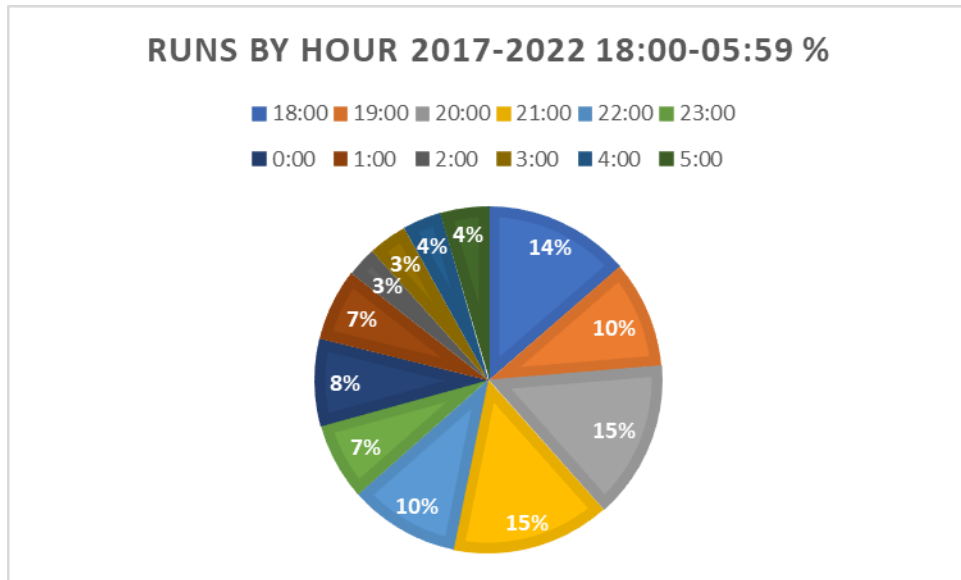
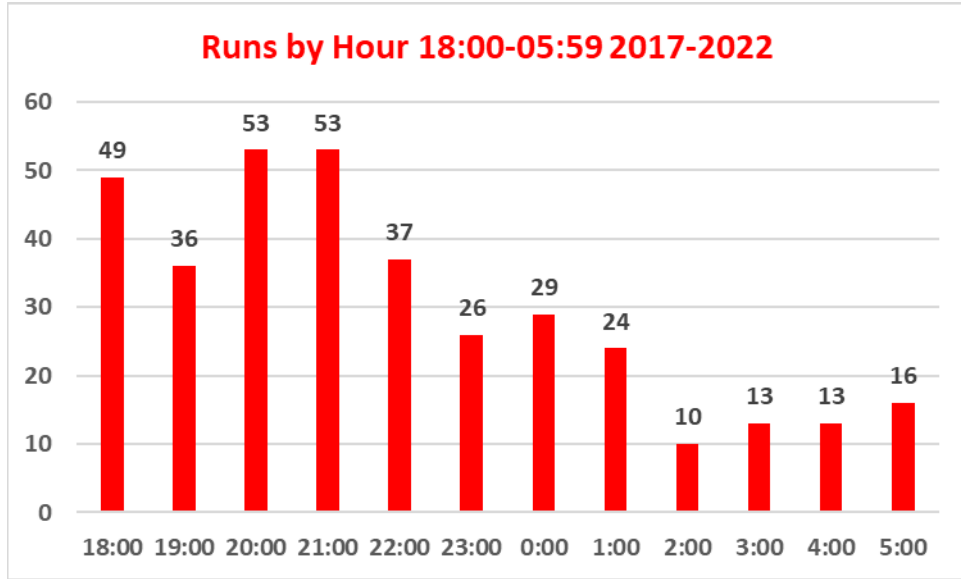
Start Date: 01/01/2017 | End Date: 12/31/2022



Hour	# of Calls
00:00 - 00:59	29
01:00 - 01:59	24
02:00 - 02:59	10
03:00 - 03:59	13
04:00 - 04:59	13
05:00 - 05:59	16
06:00 - 06:59	32
07:00 - 07:59	41
08:00 - 08:59	50
09:00 - 09:59	62
10:00 - 10:59	67
11:00 - 11:59	56
12:00 - 12:59	67
13:00 - 13:59	60
14:00 - 14:59	67
15:00 - 15:59	64
16:00 - 16:59	67
17:00 - 17:59	84
18:00 - 18:59	49
19:00 - 19:59	36
20:00 - 20:59	53
21:00 - 21:59	53
22:00 - 22:59	37
23:00 - 23:59	26



**Busiest Hour 06:00-17:59: 17:00 84 Runs/12%**



**Busiest Hour 18:00-05:59: 20:00/21:00 53 Runs/15%**



### North Catasauqua Fire Company

North Catasauqua, PA

This report was generated on 1/23/2023 3:50:53 PM



#### Mutual or Automatic Aid Given by FDID for Incident Type for Date Range

Incident Type(s): All Incident Types | Start Date: 01/01/2017 | End Date: 12/31/2022

FDID: 39002 - Catasauqua Fire Dept

Count of Calls for FDID 39002 - Catasauqua Fire Dept : 314

**29% of Total Calls 2017-2022**

### North Catasauqua Fire Company

North Catasauqua, PA

This report was generated on 1/23/2023 3:57:09 PM



#### Mutual or Automatic Aid Received by FDID for Incident Type for Date Range

Incident Type(s): All Incident Types | Start Date: 01/01/2017 | End Date: 12/31/2022

FDID: 39002 - Catasauqua Fire Dept

FDID: 39002 - Total Calls: 130

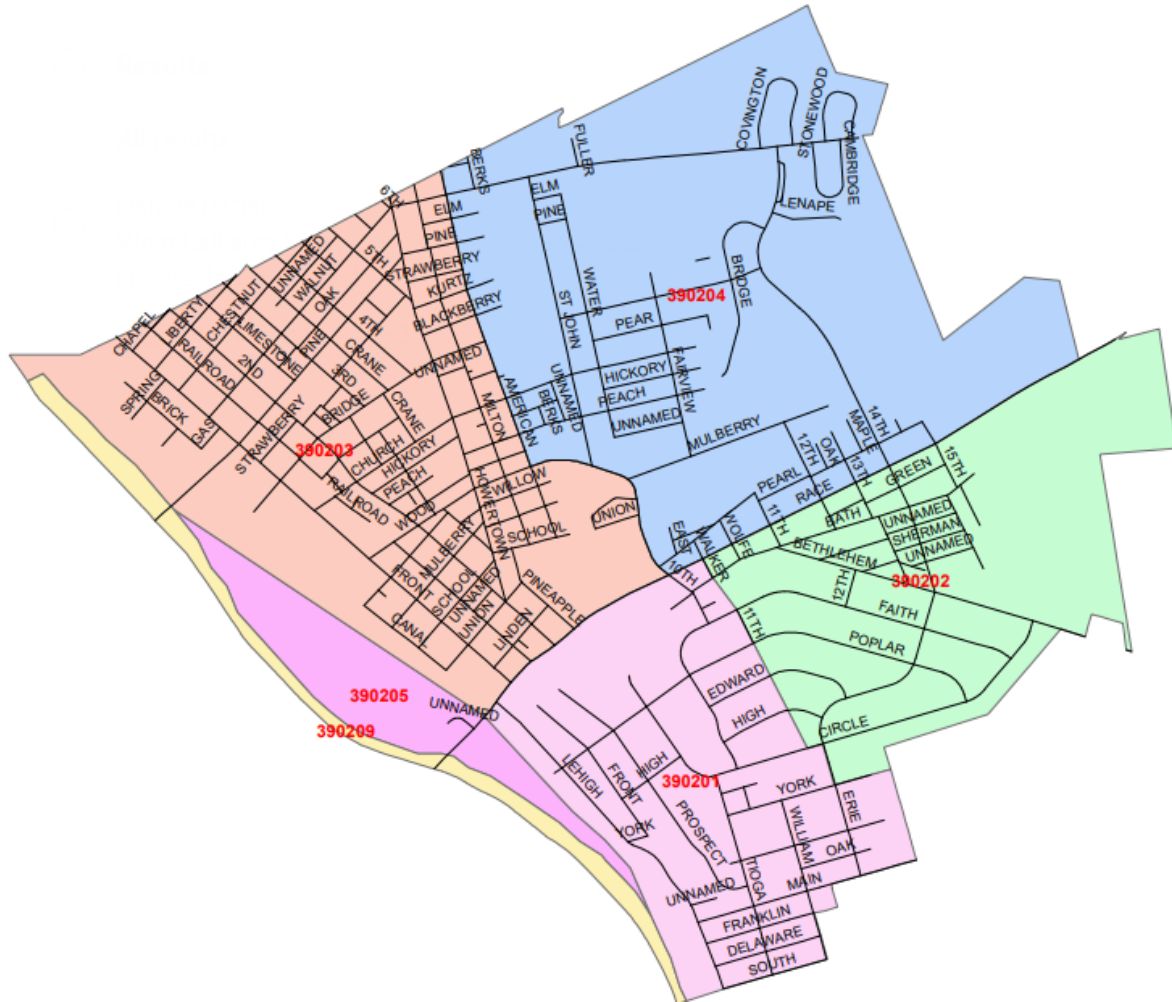
**12% of Total Call 2017-2022**

**Recommendation:** *Recording of all data of the various operational, response time, staffing and training components provided through all available means. All data should be managed through a Fire Incident Reporting program and analyzed monthly by the municipalities and the Fire Companies.*

## **Analysis of Fire Services**

An analysis of the common issues and concerns of both fire companies, along with the operations, response data and mutual aid responses indicates shared commonalities in challenges, operations, and opportunities. The companies have been operating as individual entities out of the Catasauqua Fire House since May 22, 2022. Observations made through site visit, interaction with the leaders of each organization and a review of run, staffing and response data indicate that this is a successful endeavor. Given the geographic proximity of Catasauqua Borough and North Catasauqua Borough, empirical and objective data shows that both municipalities can be served jointly by this current arrangement.

## Station 2 Catasauqua Borough Box Map



### Station 18 North Catasauqua Borough Box Map



## PA HR 148 Options for Catasauqua and North Catasauqua

<b>Forms of Regionalization in the DCED Process</b>
<p><b>Consolidation:</b> The combination of two or more companies which results in the termination of all companies and the creation of a new company with a new name. All assets and liabilities of the former companies are transferred to the new company.</p>
<p><b>Merger:</b> The combination of two or more companies which results in all but one relinquishing its name. All assets and liabilities of joining companies are transferred to the surviving company.</p>
<p><b>Association:</b> Agreement of two or more companies to combine and administer similar activities through an umbrella organization. Does not normally involve transfers or combination of assets, as most costs of operations or programs are shared. In some instances, associations may be a prelude to a merger or consolidation.</p>
<p><b>Regionalization:</b> Although the term "regionalization" can and is used to generically refer to almost any form of regional partnership or joint venture, DCED uses the term in a specific sense in its Shared Municipal Services Program. As used by DCED, regionalization is the combination of some assets of two or more companies to accomplish specific objectives and tasks. Each participating company retains its identity.</p>

Consolidation: ~ *Not recommended*

Merger: ~ *Not recommended*

Association: ~ *Not recommended*

**Regionalization:** Although the term “regionalization” can and is used to generically refer to almost any type of regional partnership or joint venture, DCED uses the term in a specific sense in its Shared Municipal Services Program. As used by DCED, regionalization is the combination of specific assets of two or more organizations, groups, or municipalities to accomplish specific objectives and tasks. Each participating company retains its identity. ~ **RECOMMENDED**

**Recommendation:** *Catasauqua Borough and North Catasauqua Borough shall coordinate a Regionalization for the Catasauqua Fire Company and North Catasauqua Fire Company into a single Regional Fire Protection entity in a cooperative manner, to protect both municipalities.*

**Recommendation:** *All Regionalization actions should be accomplished by each municipality codifying this action through adoption of appropriate ordinances and/or resolutions, along with an accompanying signed Fire Services Agreement. An Annual Financial & Operational report should be submitted to each Municipality. Consult the Intergovernmental Cooperation Handbook published by the Pennsylvania Department of Community & Economic Development regarding sharing of Fire Services.*

<b>Recent Successful Regionalization Efforts With DCED Involvement</b>	
<p><b><u>Consolidations</u></b></p> <p>Bloomsburg (Columbia)</p> <p>Wall Borough/East McKeesport (Allegheny)</p> <p>Mount Pleasant Township (Wayne)</p> <p>Warrior Run (Union/Northumberland)</p> <p>Elizabeth Township (Allegheny)</p> <p>Marcus Hook Borough (Delaware)</p> <p>Spring Township/West Lawn Borough (Berks)</p> <p>Morrisville Borough (Bucks)</p> <p>Middletown Borough (Dauphin)</p>	<p><b><u>Mergers</u></b></p> <p>Halifax Borough/Township (Dauphin)</p> <p>Forest City (Susquehanna)</p> <p>Lemoyne/Wormleysburg (Cumberland)</p> <p>Overfield/Falls/Exeter Townships (Wyoming)</p> <p>Logan Township (Blair)</p> <p>Columbia Borough (Lancaster)</p> <p>Jersey Shore Borough (Lycoming)</p> <p>Young Township (Indiana)</p> <p>Buckhorn/Ferndale/Hemlock Townships (Columbia)</p> <p>Canton Borough (Bradford)</p>
<p><b><u>Regionalizations</u></b></p> <p>Elizabeth Twp/Warwick Twp/Lititz Borough (Lancaster)</p> <p>Muncy and Montgomery Boroughs (Lycoming)</p>	<p><b><u>Associations*</u></b></p> <p>Jefferson Hills Borough (Allegheny)</p> <p>(*A merger also occurred as part of this association action.)</p>

## Model Ordinance

Below for review is a “Model Municipal Ordinance”.

E:\SHelidelberg\Ordinances\Fire Co\Ordinance.DOC

### **ORDINANCE NO. 217**

**AN ORDINANCE OF THE TOWNSHIP OF SOUTH HEIDELBERG, BERKS COUNTY, PENNSYLVANIA, AUTHORIZING THE TOWNSHIP TO ENTER INTO AN INTERGOVERNMENTAL AGREEMENT WITH THE BOROUGH OF WERNERSVILLE, THE BOROUGH OF SINKING SPRING AND THE TOWNSHIP OF LOWER HEIDELBERG, BERKS COUNTY FOR THE PURPOSE OF FORMING, ESTABLISHING AND JOINING A REGIONAL FIRE DEPARTMENT TO BE KNOWN AS WESTERN BERKS FIRE DEPARTMENT.**

WHEREAS, the Western Berks Fire Task Force has recommended that the four (4) fire companies currently serving the municipalities of Lower Heidelberg Township, Sinking Spring Borough, South Heidelberg Township and Wernersville Borough merge into one (1) fire department to be known as Western Berks Fire Department in order to insure the continued provision of quality fire protection services utilizing trained and certified fire fighters and equipment, which meets the standards required by the Commonwealth of Pennsylvania for certification as a fire department, for the benefit of the health, safety and welfare of the residents of each participating municipality; and

WHEREAS, Section 66803(c) of the Second Class Township Code authorizes the Township of South Heidelberg (the “Township”) to enter into a contract with the proper authorities of nearby or adjacent cities, boroughs, or townships, for the purpose of the furnishing to and the receiving of mutual assistance in fire protection from such cities, boroughs, or townships, and to make appropriations therefor, through an intergovernmental cooperation agreement adopted under the authority of the Pennsylvania Intergovernmental Cooperation Act, *53 Pa.C.S. § 2301, et seq.*, as amended (the “Act”); and

WHEREAS, the Township may enter into an intergovernmental cooperation agreement upon the passage of an ordinance by the Board of Supervisors pursuant to the Act; and

WHEREAS, the Township desires to enter into an intergovernmental cooperation agreement (“Agreement”) with the other participating municipalities in order to establish and join the Western Berks Fire Department.

NOW, THEREFORE, BE IT ENACTED AND ORDAINED by the Board of Supervisors of the Township of South Heidelberg, Berks County, Pennsylvania, and it is hereby ENACTED AND ORDAINED as follows:

SECTION 1. TITLE AND BACKGROUND. The Title and Background of this Ordinance as set forth above are incorporated herein by reference.

SECTION 2. AUTHORIZATION. The Board of Supervisors of the Township hereby approve entering into the Agreement, a copy of which is attached hereto and incorporated herein by reference (and which shall be filed with the minutes of the meeting at which this Ordinance was enacted), with the intent and effect that the Township shall be bound by the Agreement.

SECTION 3. EXECUTION. The Chairman of the Board of Supervisors of the Township is hereby authorized and directed on behalf of the Township: (i) to execute and deliver the Agreement; and (ii) to execute and deliver such additional instruments, and to take such further actions, as may be necessary or appropriate to carry forth the Agreement and the transactions to be effected under the Agreement, including payment of the membership fees, as may be due from the Township under the Agreement.

SECTION 4. RATIFICATION. All actions of any officer, agent or other representative of the Township heretofore taken in the pursuit of the establishment of the Western Berks Fire Department and/or the Township's participation therein are hereby ratified and approved in all respects.

SECTION 5. NECESSARY ACTS. The Township is hereby authorized to take such other action as may be necessary or appropriate to carry out the purposes of this Ordinance and of the Agreement.

SECTION 6. PENNSYLVANIA INTERGOVERNMENTAL COOPERATION ACT. This Ordinance is adopted pursuant to the authority granted in the Act and, as required thereby, the following matters are specifically found and determined:

- (a) The conditions of the Agreement are set forth in the Agreement;
- (b) The duration of the Agreement is set forth in the Agreement;
- (c) The purposes, objectives, powers and scope of authority granted in the Agreement are as set forth in the WHEREAS clauses of this Ordinance and in the Agreement;
- (d) The manner and extent of financing the Agreement is through the membership fees set forth in Section 4 of the Agreement, among other things;
- (e) The corporate organizational structure of Western Berks Fire Department shall be comprised of a Board of Trustees and the members (i.e. volunteer and/or paid firefighters) in accordance with its bylaws as a Pennsylvania nonprofit corporation (the "Bylaws");
- (f) All property, real or personal, of Western Berks Fire Department shall be acquired, managed, licensed or disposed of in accordance with the terms of the Agreement and the Bylaws; and
- (g) Western Berks Fire Department is empowered to enter into contracts for policies of group insurance and employee benefits for its employees, if any, pursuant to the Agreement.

SECTION 7. REPEAL OF ORDINANCES. Any ordinance or part of ordinances conflicting with the provisions of this Ordinance are hereby repealed insofar as they are inconsistent with this Ordinance's provisions.



SECTION 8. SEVERABILITY. If any article, section, subsection, provision, regulation, limitation, restriction, sentence, clause, phrase or word in this Ordinance, is, for any reason declared to be illegal, unconstitutional or invalid, by any Court of competent jurisdiction, this decision shall not affect or impair the validity of the Ordinance as a whole, or any other article, section, subsection, provision, regulation, limitation, restriction, sentence, clause, phrase, word, or remaining portion of the within Ordinance. The Board of Supervisors of the Township of South Heidelberg, Pennsylvania, hereby declares that it would have adopted the within Ordinance and each article, section, subsection, provision, regulation, limitation, restriction, sentence, clause, phrase and word thereof, irrespective of the limitations, restrictions, sentences, clauses, phrases, or word that may be declared illegal, unconstitutional or invalid.

SECTION 9. EFFECTIVE DATE. This Ordinance shall become effective five (5) days from the date of enactment.

DULY ORDAINED and ENACTED as an Ordinance this 26<sup>th</sup> day of March, 2009.

TOWNSHIP OF SOUTH HEIDELBERG

Attest:

\_\_\_\_\_  
David A. Schaeffer, Chairman

\_\_\_\_\_  
Secretary (SEAL)

\_\_\_\_\_  
Dean M. Baim, Supervisor

\_\_\_\_\_  
Richard E. Hummel, Supervisor

I:\SHeidelberg\Fire Co. Merger\Intermunicipal Agreement (clena 3-18-09).doc

**WESTERN BERKS FIRE DEPARTMENT**  
**INTERMUNICIPAL AGREEMENT**

THIS AGREEMENT (the "Agreement") is made on the dates indicated below, by and among the following municipalities located in Berks County, Pennsylvania and existing by virtue of the various municipal laws of the Commonwealth of Pennsylvania (the "Agency Members") pursuant to the authority granted by the respective Ordinances:

Name and Address of Municipal Party	Date Agreement Signed	Ordinance No. and Date
Township of Lower Heidelberg 720 Brownsville Road Sinking Spring, Pennsylvania 19608	_____	_____
Borough of Sinking Spring 3940 Penn Avenue Sinking Spring, Pennsylvania 19608	_____	_____
Township of South Heidelberg 68A North Galen Hall Road Wernersville, Pennsylvania 19565	_____	_____
Borough of Wernersville 100 North Reber Street Wernersville, Pennsylvania 19565	_____	_____

For and in consideration of the mutual covenants and obligations contained herein and intending to be legally bound hereby, the Agency Members agree as follows:

1. **Formation of The Western Berks Fire Department.** The Agency Members hereby agree to the formation and establishment of a regional fire department named Western Berks Fire Department (the "Agency") as authorized by the Pennsylvania Intergovernmental Cooperation Act, Act 177 of December 19, 1996 (*53 Pa.C.S. § 2301 et seq.*) (the "Act") and the above-referenced ordinances of the Agency Members (the "Ordinances"), whereby the Agency shall have the powers and duties as provided in the Ordinances and this Agreement, consistent with the authority of the Act and other applicable laws. Each Agency Member agrees and pledges good faith cooperation in the exercise of the powers, duties and functions of the Agency to each other. The Agency shall be incorporated as a nonprofit corporation under the Pennsylvania Business Corporation Law, as amended (the "BCL").

2. **Purpose and Authority.** The purpose of this Agency is to carry out the powers and duties of the Agency Members to ensure that fire and related emergency services are provided within their respective municipalities by the means and to the extent determined by the respective municipalities, as set forth in Section 66553(a) of the Second Class Township Code



and Section 46202(82) of the Borough Code. In furtherance of this, the Agency Members are exercising their authority to enter into a contract with the proper authorities of nearby or adjacent cities, boroughs, or townships, for the purpose of the furnishing to and the receiving of mutual assistance in fire protection from such cities, boroughs, or townships, and to make appropriations therefor, as set forth in Section 66803(c) of the Second Class Township Code and Section 46202(35) of the Borough Code.

3. Membership. To become and remain an Agency Member, a municipality shall adopt and maintain in effect an ordinance authorizing Agency membership in the form of the Ordinances, properly authorize and execute this Agreement and comply with all requirements of the Ordinances, this Agreement and other properly adopted policies, including all financial requirements, as set forth in this Agreement. Additionally, the respective founding fire companies of each Agency Member shall join the Agency and contribute their assets, debts and liabilities to the Agency as set forth in the Bylaws. In the event that a founding fire company fails to join the Agency as set forth herein, then the membership of the respective Agency Member in the Agency shall be void.

4. Membership Fees.

A. All Agency Members shall pay an initial membership fee at the time of execution of this Agreement in the respective amount for each Agency Member in accordance with its proportionate share of the tax base of the region served by the Agency ("Proportionate Share"), as set forth in Exhibit "A" attached hereto and incorporated herein by reference, less a credit for each Agency Member in the amount of Six Thousand Five Hundred Dollars (\$6,500.00). Thereafter, all Agency Members shall pay an annual membership fee per calendar year commencing with calendar year 2010 in the respective amount for each Agency Member in accordance with its Proportionate Share for that calendar year, as determined by the Board (as defined below), with the amount of said fee being provided by the Board to the Agency Members together with the Agency's budget in accordance with Section 7(D) below. The initial membership fee and annual membership fees for each calendar year shall be payable on a quarterly basis by March 31<sup>st</sup>, June 30<sup>th</sup>, September 30<sup>th</sup> and December 31<sup>st</sup> of each calendar year.

B. In the event that an Agency Member shall fail to timely pay the membership fees as set forth in Section 4(A) above more than fifteen (15) days after the same shall have been due, the Agency Member shall be in default of this Agreement ("Event of Default"). Upon the occurrence of an Event of Default and so long as such Event of Default shall continue unwaived by the Agency, interest shall accrue in an amount equal to twelve percent (12%) per annum until repayment of the entire balance of the membership fee. Additionally, the Agency may commence an action at law or equity in order to collect the outstanding membership fees due plus interest, costs of suit and reasonable attorneys' fees. If an Event of Default shall remain uncured by the Agency Member for a consecutive period of thirty (30) days, such Event of Default shall result in grounds for termination of membership of the Agency Member in the Agency upon a unanimous vote to terminate such membership by the non-defaulting Agency Members. The remedies of the Agency shall be cumulative and concurrent, and may be pursued singly, successively, or together at its sole discretion, and may be exercised as often as the occasion therefor shall occur; and failure to exercise any such right or remedy shall in no event

be construed as a waiver or release thereof.

5. Effective Date; Term and Termination. This Agreement shall be effective as of July 1, 2009 and shall continue in full force and effect in perpetuity unless otherwise dissolved by the Agency Members pursuant to the Agency's bylaws (the "Bylaws") and the BCL. An Agency Member wishing to withdraw from the Agency and terminate its membership and participation in the Agency shall send a letter of intent at least ninety (90) days prior to its projected date of withdrawal to the Agency. Upon termination from the Agency, either through written notice as set forth above or as a result of the breach of this Agreement by an Agency Member as set forth in Section 4(B) above, the rights, responsibilities and duties of the terminated Agency Member with respect to the Agency, as well as to any services of the Agency, shall immediately cease and the return of property, if any, shall be as set forth in the Bylaws.

6. Organization.

A. Governance. The Agency shall be governed by a Board of Trustees (the "Board") and the members (i.e. volunteer and/or paid firefighters) of the Agency (the "Members") in accordance with the Bylaws.

B. Duties and Responsibilities. The Board and the Members shall carry out the business of the Agency and perform the necessary functions and exercise the stated powers of the Agency to meet the objectives of the Agency consistent with governing laws, the Ordinances and this Agreement. The Board and the Members shall establish rules, regulations, policies and procedures from time to time to govern the Agency's activities and the duties of the Agency in accordance with the Bylaws.

C. Bylaws. A true and correct copy of the Bylaws is attached hereto as Exhibit "B" and incorporated herein by reference. By executing this Agreement, the Agency Members ratify and adopt the Bylaws as presented to govern the Agency. The Board shall also adopt the Bylaws in accordance with the BCL.

7. Budget and Finance.

A. Purchases and Contracts. The Agency may acquire equipment, goods and services as it may determine are necessary and appropriate for the functions to be carried out by the Agency under and subject to the Bylaws and in compliance with the requirements of Section 2308 of the Act.

B. Audit. The Agency shall be audited annually by a certified public accounting firm selected by the Board.

C. Fiscal Year. The fiscal year of the Agency shall be January 1 to December 31.

D. Budget. The Board shall, on or before October 31 of each year, prepare and deliver to each Agency Member a proposed budget for Agency operations for the next calendar year in order that each Agency Member may budget and appropriate amounts necessary

for Agency business.

8. Insurance, Waiver and Indemnity. The Agency shall obtain appropriate policies of insurance providing coverage for the activities of the Agency, the Board and the Members under this Agreement. Such policies shall contain a waiver of subrogation clause or endorsement under which the insurance company waives its right of subrogation against each Agency Member as to any and all causes of action or claims that may arise out of the activities of the Agency hereunder, provided that coverage containing such waiver of subrogation remains available. Each Agency Member hereby waives any and all claims against all other Agency Members and against the Agency, the Board and the Members, which may arise out of the activities of the Agency while rendering services under this Agreement. For purposes of liability not covered by insurance protection, involving actions arising out of this Agreement, all Agency Members shall be proportionately liable for judgments rendered against any Agency Member in connection with services rendered to pursuant to this Agreement. The proportion of liability shall be equally divided among all Agency Members at the time that the services in question were rendered. The Agency Members hereby agree to indemnify and hold harmless all other Agency Members from any and all claims by third parties, suits, damages and losses, including costs and expenses and attorney fees incident to or rendering from any injury to any person or any damage to any property which may arise out of the rendering of services pursuant to this Agreement by the implicated Agency Member(s).

9. Debt Indemnification. Upon the formation and establishment of the Agency, the Agency Members shall assign, convey and set over to the Agency and the Agency agrees to assume all rights, responsibility and liability related to all of the debt of the Agency Members incurred by such Agency Members for the purpose of fire equipment acquisition and other fire prevention related purpose (collectively, the "Assumed Debt"). The Agency hereby agrees to indemnify, defend and hold harmless the respective Agency Members, their governing bodies, officers, agents, employees and representatives from and against any claim, action, suit, loss, damage, liability, deficiency, fine, penalty, cost, interest charge or expense (including reasonable attorneys' fees and court costs) arising out of, or in connection with, any Assumed Debt.

10. Immunity. The services performed and the expenditures incurred under this Agreement shall be deemed for public and governmental purposes, and all immunities from liabilities enjoyed by the Agency Members within their respective municipal boundaries shall extend to their participation in services outside their respective boundaries and within the geographical area served by the Agency.

11. Invalidity. The invalidity, illegality or unconstitutionality of any portion of this Agreement shall not impair or affect the invalidity of this Agreement as a whole or any other part thereof.

12. Successors. This Agreement shall be binding upon the parties hereto and their respective successors and assigns.

13. Counterparts. This Agreement may be signed in counterparts or any number of duplicate originals, each of which shall be deemed an original, but all of which together shall constitute one and the same instrument.

14. Governing Law. This Agreement shall be governed and construed in accordance with the laws of the Commonwealth of Pennsylvania.

IN WITNESS WHEREOF, the parties hereto have executed this Agreement as of the dates first above written.

BOARD OF SUPERVISORS OF THE TOWNSHIP OF LOWER HEIDELBERG

Attest:

\_\_\_\_\_  
Chairman

\_\_\_\_\_  
Secretary (SEAL)

\_\_\_\_\_  
Supervisor

\_\_\_\_\_  
Supervisor

BOROUGH OF SINKING SPRING

\_\_\_\_\_  
Secretary (SEAL)

By: \_\_\_\_\_  
President

Approved as an Ordinance of the Borough of Sinking Spring this \_\_\_\_ day of \_\_\_\_\_, 2009.

\_\_\_\_\_  
Mayor

BOARD OF SUPERVISORS OF THE TOWNSHIP OF SOUTH HEIDELBERG

Attest:

\_\_\_\_\_  
Chairman

\_\_\_\_\_  
Secretary (SEAL)

\_\_\_\_\_  
Supervisor

\_\_\_\_\_  
Supervisor

PHOTOGRAPHY BY: [unreadable]



**EXHIBIT "A"**

**CALCULATION OF INITIAL MEMBERSHIP FEES**

<u>Municipality</u>	<u>% of Tax Base</u>	<u>Initial Membership Fee</u>
Township of Lower Heidelberg	33.27%	\$113,975.00
Borough of Sinking Spring	19.72%	\$67,556.00
Township of South Heidelberg	36.17%	\$123,910.00
Borough of Wernersville	10.85%	\$37,170.00



### Staffing & Response Times

The National Fire Protection Association (NFPA) Standard 1720: *Organization and Deployment of Fire Suppression Operations, Emergency Medical Operations, and Special Operations to the Public by Volunteer Fire Departments*, is the Nationally recognized Standard for evaluation of staffing and response times for volunteers.

Demand Zone <sup>a</sup>	Demographics	Minimum Staff to Respond <sup>b</sup>	Response Time (minutes) <sup>c</sup>	Meets Objective (%)
Urban area	>1000 people/mi <sup>2</sup>	15	9	90
Suburban area	500-1000 people/mi <sup>2</sup>	10	10	80
Rural area	<500 people/mi <sup>2</sup>	6	14	80
Remote area	Travel distance ≥ 8 mi	4	Directly dependent on travel distance	90
Special risks	Determined by AHJ	Determined by AHJ based on risk	Determined by AHJ	90

<sup>a</sup> A jurisdiction can have more than one demand zone.

<sup>b</sup> Minimum staffing includes members responding from the AHJs department and automatic aid

<sup>c</sup> Response time begins upon completion of the dispatch notification and ends at the time interval shown in the table.

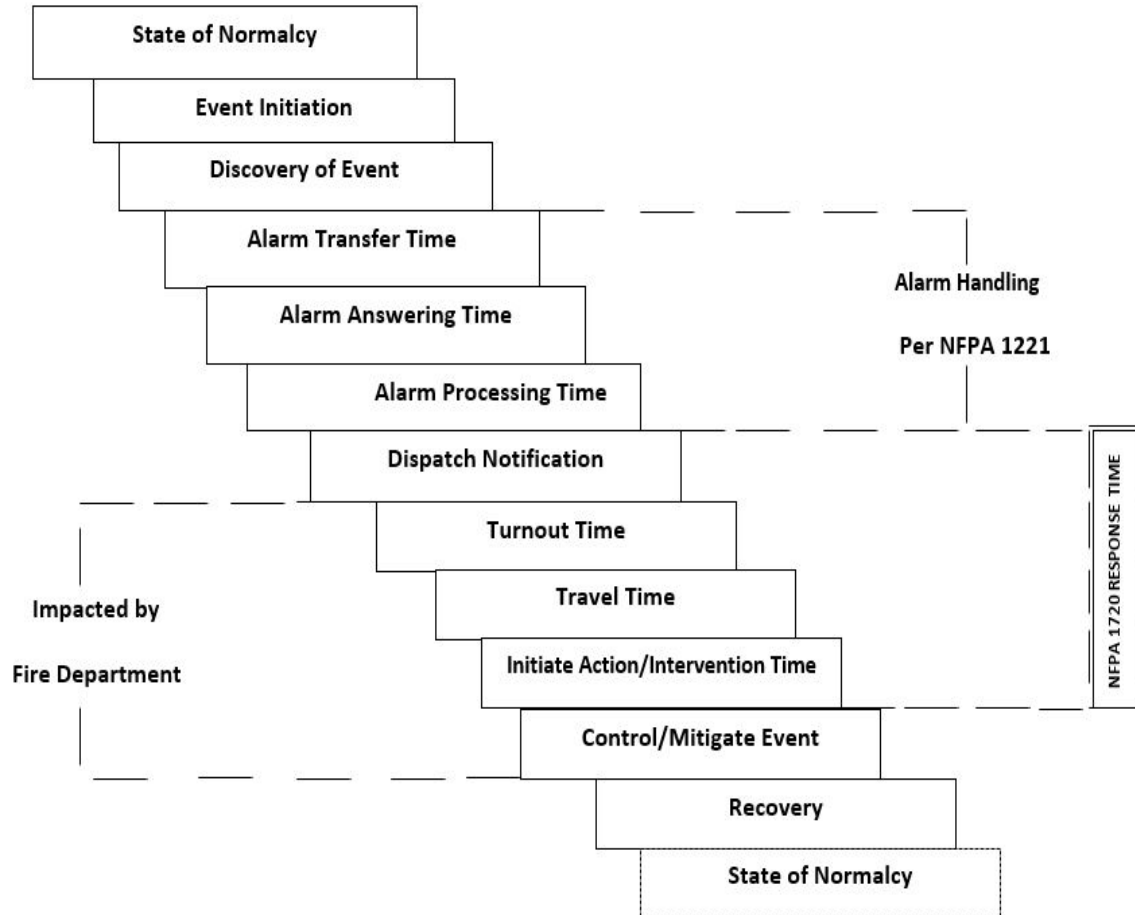
Catasauqua - 1.3 square miles & population of 6,518. Population density of 5,013.8/ Sq. Mile  
Urban Demand Zone

North Catasauqua - 0.71 square miles & population of 2,971. Population density of 4,184.5/ Sq. Mile  
Urban Demand Zone

Jointly both Municipalities have 2.01 Square Miles and a population of 9,489 for a population density of 4,720.8/Sq. Mile

**Recommendation:** *The Boroughs should establish fire response and staffing benchmark performance objectives as per NFPA 1720 for the Urban area. This should be recorded and tracked through whatever data reporting system is used in the future to evaluate if NFPA 1720 is being met.*

**CASCADE OF EVENTS**



## Staffing

### **Station 2:**

**Volunteers Fire Fighters:** Respond from their homes and/or places of employment after receiving notification via dispatch from the Lehigh County 911 Center.

### **Station 18**

**Volunteers Fire Fighters:** Respond from their homes and/or places of employment after receiving notification via dispatch from the Lehigh County 911 Center.

**Response Staffing – Station 2: 2017-2022**

**Catasauqua Fire Department**

Catasauqua, PA

This report was generated on 1/16/2023 3:25:31 PM



**Personnel Count per Incident for Date Range**

Start Date: 01/01/2017 | End Date: 12/31/2022

NUMBER OF PEOPLE		
ON APPARATUS	NOT ON APPARATUS	TOTAL
6.4	2.6	8.9

**Response Time - Station 2: 2017 - 2022**

**Catasauqua Fire Department**

Catasauqua, PA

This report was generated on 1/16/2023 3:15:34 PM



**Average Response Time for Agency for Date Range**

Start Date: 01/01/2017 | End Date: 12/31/2022

AGENCY	AVERAGE RESPONSE TIME MM:SS (Dispatch to Arrived)
Catasauqua Fire Department	7:09

**Response Staffing – Station 18: 2017-2022**

**North Catasauqua Fire Company**

*North Catasauqua, PA*

This report was generated on 1/16/2023 3:36:13 PM



**Personnel Count per Incident for Date Range**

Start Date: 01/01/2017 | End Date: 12/31/2022

NUMBER OF PEOPLE		
ON APPARATUS	NOT ON APPARATUS	TOTAL
4.6	0.3	4.9

**Response Time - Station 18: 2017 - 2022**

**North Catasauqua Fire Company**

*North Catasauqua, PA*

This report was generated on 1/16/2023 3:40:56 PM



**Average Response Time for Agency for Date Range**

Start Date: 01/01/2017 | End Date: 12/31/2022

AGENCY	AVERAGE RESPONSE TIME MM:SS (Dispatch to Arrived)
North Catasauqua Fire Company	8:29

### Fire Station Facilities

**Station 2:** 90 Bridge Street, Catasauqua. A modern, functional Fire Station. Has all the contemporary amenities needed. This location is capable of performing as a Regional Fire Station.

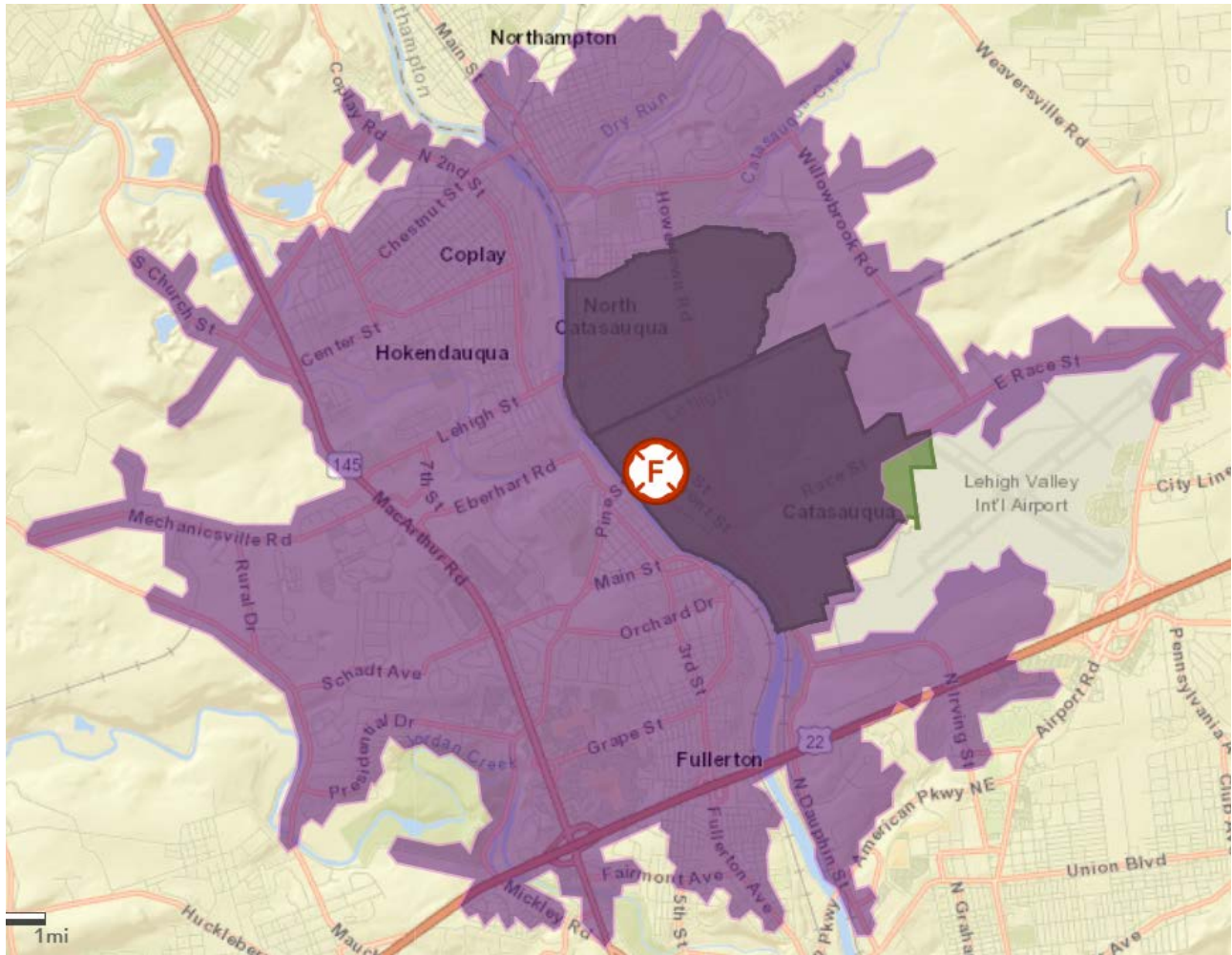


**Station 18:** 1066 Arch Street, North Catasauqua. This is a dated, cramped facility. It has apparatus only space adjacent to Borough Hall. In the lower level of Borough Hall, the fire company has administrative offices and limited space for the members. This location is not capable of performing as a Regional Fire Station.



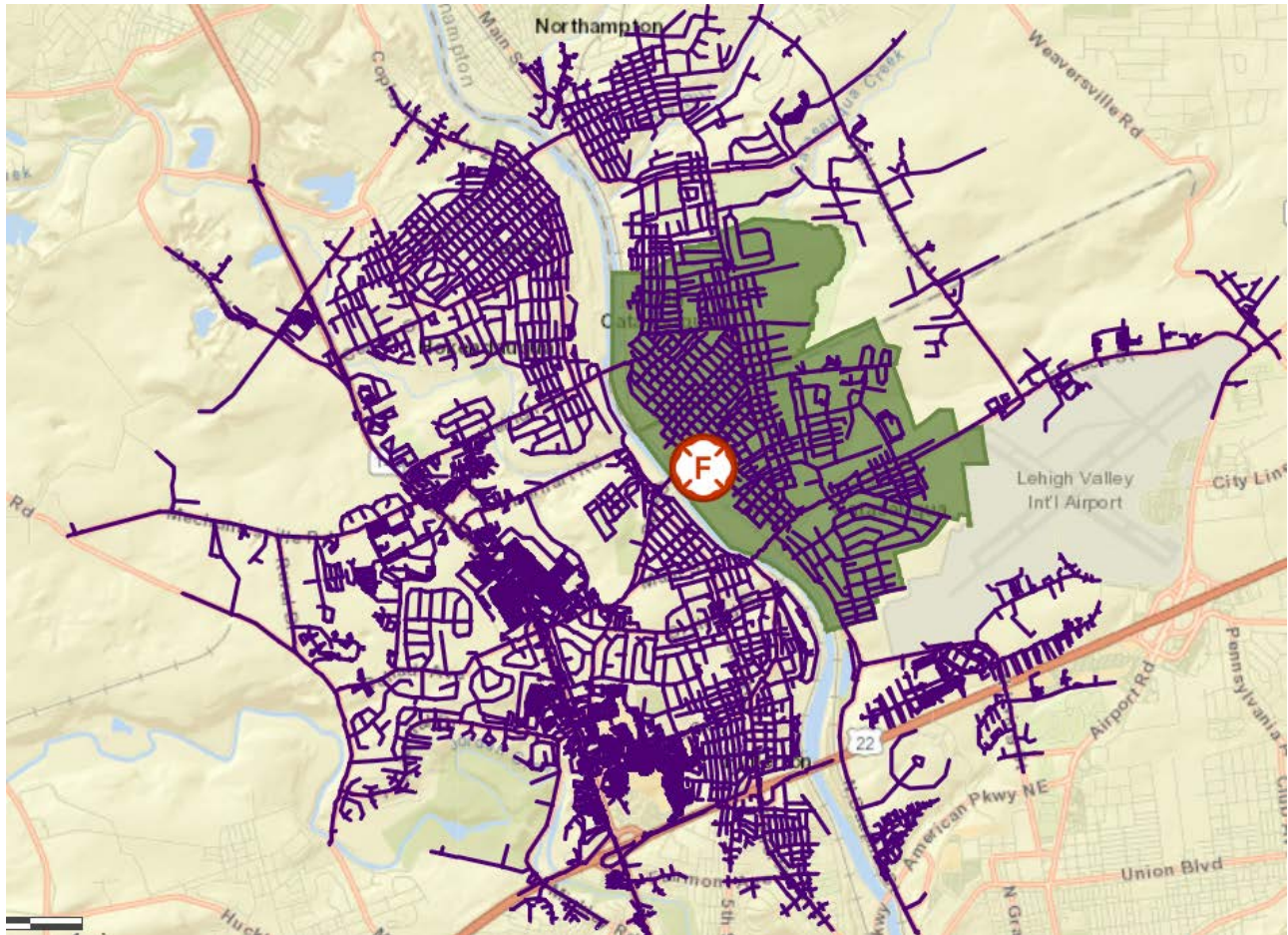
**NFPA 1720 9 Minute Travel Area**

**Proposed Regional Fire Station Location: 90 Bridge Street, Catasauqua.**



**NFPA 1720 9 Minute Reachable Streets**

**Proposed Regional Fire Station Location: 90 Bridge Street, Catasauqua.**



Station 2 meets the NFPA 1720 Urban Demand Zone for the NFPA 1720 Travel Time.

**Recommendation: *Operate the Regional Fire Station out of 90 Bridge St. Catasauqua.***



## **Fire Apparatus Fleet**

The Boroughs of Catasauqua and North Catasauqua should direct the companies to develop an apparatus plan with oversight by each borough of their individual company. The Boroughs could, through the shared services process, direct the companies to develop a joint apparatus plan for future apparatus purchases.

## Planning

A Community Fire Protection Planning Program should be developed. As part of the planning, a Community Risk Analysis should also be conducted.

**The plans should have the following ranges.**

**Short-Term: 1 to 3 years**  
**Mid-Term: 3 to 5 years**  
**Long Range: 5 to 10 years**

The planning process should allow the flexibility to amend and change the plans at each range based upon contingencies and realities. The plan must project the service needs in all phases of planning based upon changes in social conditions, demographics, and planning in the municipalities. These can and will impact the delivery of fire protection. Professional planning, or lack thereof, will determine if the impact is a positive one or a negative one.

The goal would be to develop a planning procedure in regard to the fire service's needs. The report should consider past demands for services, proposed development, and demographic changes that may impact existing service delivery capabilities and the ability to provide for projected future service needs. Citizen participation and local community organizations should also be encouraged to join in this process. This method will allow for collective and comprehensive local and regional emergency services planning.

## General Items

- The municipalities review the Pennsylvania Borough Code, to see if there are any items the municipalities do not address currently. Several recommendations contained in this report, if accepted, must be reviewed in the context of these codes. Any additions to any service agreements, mutual aid agreements or the municipal codes themselves should be adopted by ordinances and/or resolutions.
  
- Review the following:
  - ❖ Pennsylvania Senate Resolution 60 report.
  - ❖ Pennsylvania House Resolution 148 report.
  
- Review reports from the International Association of Fire Chiefs:
  - ❖ Red Ribbon Report, "Lighting the Path of Evolution, Leading the Transition in Volunteer and Combination Fire Department."
  - ❖ Blue Ribbon Report, "Preserving and Improving the Future of the Volunteer Fire Service."
  - ❖ White Ribbon Report, "Keeping the lights on, and the trucks running and the volunteers responding."

## **Conclusion**

The Catasauqua and North Catasauqua Fire Companies are community assets. Each Borough sees the intrinsic value of the services they provide. The analysis, conclusions, and recommendations contained in this report offers Catasauqua and North Catasauqua communities an opportunity to build upon the legacy of the fire protection while striving to improve it for the future with a single fire company.